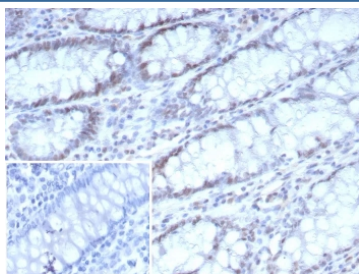


Cyclin-dependent kinase 4 Antibody / CDK4 [clone CDK4/8896] (V5466)

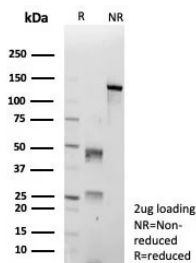
Catalog No.	Formulation	Size
V5466-100UG	0.2 mg/ml in 1X PBS with 0.1 mg/ml BSA (US sourced), 0.05% sodium azide	100 ug
V5466-20UG	0.2 mg/ml in 1X PBS with 0.1 mg/ml BSA (US sourced), 0.05% sodium azide	20 ug
V5466SAF-100UG	1 mg/ml in 1X PBS; BSA free, sodium azide free	100 ug

[Bulk quote request](#)

Availability	1-3 business days
Species Reactivity	Human
Format	Purified
Host	Mouse
Clonality	Monoclonal (mouse origin)
Isotype	Mouse IgG1, kappa
Clone Name	CDK4/8896
Purity	Protein A/G affinity
UniProt	P11802
Localization	Nucleus, Cytoplasm
Applications	Immunohistochemistry (FFPE) : 1-2ug/ml
Limitations	This Cyclin-dependent kinase 4 antibody is available for research use only.



IHC staining of FFPE human colon carcinoma tissue with Cyclin-dependent kinase 4 antibody (clone CDK4/8896). Inset: PBS used in place of primary Ab (secondary Ab negative control). HIER: boil tissue sections in pH 9 10mM Tris with 1mM EDTA for 20 min and allow to cool before testing.



SDS-PAGE analysis of purified, BSA-free Cyclin-dependent kinase 4 antibody (clone CDK4/8896) as confirmation of integrity and purity.

Description

Cyclin-dependent kinase-4 (CDK4) is a protein-serine kinase involved in the cell cycle. It is essential for the G1- to S-phase transition during the cell cycle and its expression is primarily controlled at the transcriptional level (PMID:17253961). CCND1- CDK4 axis is not only critical in glial tumor cells but also in stromal-derived cells in the surrounding tumor microenvironment that are vital to sustain tumor outgrowth (PMID:21844184). CDK4 is highly expressed in highly differentiated and dedifferentiated liposarcomas, but rarely expressed in other benign liposarcomas and other sarcomas. CDK4 and MDM2 combined to differentiate between highly differentiated liposarcoma (+), dedifferentiated liposarcoma (+) and myxoid liposarcoma, pleomorphic liposarcoma, spindle lipoma, pleomorphic lipoma and other high-grade sarcomas.

Application Notes

Optimal dilution of the Cyclin-dependent kinase 4 antibody should be determined by the researcher.

Immunogen

A recombinant fragment (within amino acids 150-303) of human Cyclin-dependent kinase 4 protein was used as the immunogen for the Cyclin-dependent kinase 4 antibody.

Storage

Aliquot the Cyclin-dependent kinase 4 antibody and store frozen at -20oC or colder. Avoid repeated freeze-thaw cycles.