

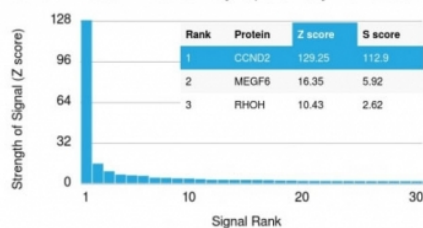
## Cyclin D2 Antibody [clone CCND2/2620] (V7375)

Catalog No.	Formulation	Size
V7375-100UG	0.2 mg/ml in 1X PBS with 0.1 mg/ml BSA (US sourced) and 0.05% sodium azide	100 ug
V7375-20UG	0.2 mg/ml in 1X PBS with 0.1 mg/ml BSA (US sourced) and 0.05% sodium azide	20 ug
V7375SAF-100UG	1 mg/ml in 1X PBS; BSA free, sodium azide free	100 ug

[Bulk quote request](#)

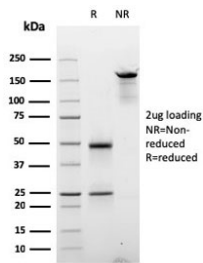
<b>Availability</b>	1-3 business days
<b>Species Reactivity</b>	Human
<b>Format</b>	Purified
<b>Clonality</b>	Monoclonal (mouse origin)
<b>Isotype</b>	Mouse IgG
<b>Clone Name</b>	CCND2/2620
<b>Purity</b>	Protein G affinity chromatography
<b>UniProt</b>	P30279
<b>Localization</b>	Nuclear, cytoplasmic
<b>Applications</b>	ELISA (order BSA/sodium Azide-free Format For Coating) :
<b>Limitations</b>	This Cyclin D2 antibody is available for research use only.

Human Protein Microarray Specificity Validation



Analysis of HuProt(TM) microarray containing more than 19,000 full-length human proteins using Cyclin D2 antibody (clone CCND2/2620). These results demonstrate the foremost specificity of the CCND2/2620 mAb.

Z- and S- score: The Z-score represents the strength of a signal that an antibody (in combination with a fluorescently-tagged anti-IgG secondary Ab) produces when binding to a particular protein on the HuProt(TM) array. Z-scores are described in units of standard deviations (SD's) above the mean value of all signals generated on that array. If the targets on the HuProt(TM) are arranged in descending order of the Z-score, the S-score is the difference (also in units of SD's) between the Z-scores. The S-score therefore represents the relative target specificity of an Ab to its intended target.



SDS-PAGE analysis of purified, BSA-free Cyclin D2 antibody (clone CCND2/2620) as confirmation of integrity and purity.

## Description

Cyclins are a family of proteins that control how cells proceed through the multi-step cycle of cell division. Cyclin D2 helps to regulate a step in the cycle called the G1-S transition, in which the cell moves from the G1 phase, when cell growth occurs, to the S phase, when the cell's DNA is copied (replicated) in preparation for cell division. Cyclin D2's role in the cell division cycle makes it a key controller of the rate of cell growth and division (proliferation) in the body.

## Application Notes

Optimal dilution of the Cyclin D2 antibody should be determined by the researcher.

## Immunogen

Recombinant human protein was used as the immunogen for the Cyclin D2 antibody.

## Storage

Store the Cyclin D2 antibody at 2-8°C (with azide) or aliquot and store at -20°C or colder (without azide).