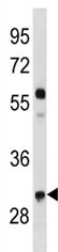


## Cyclin D2 Antibody (CCND2) (F52197)

Catalog No.	Formulation	Size
F52197-0.4ML	In 1X PBS, pH 7.4, with 0.09% sodium azide	0.4 ml
F52197-0.08ML	In 1X PBS, pH 7.4, with 0.09% sodium azide	0.08 ml

[Bulk quote request](#)

<b>Availability</b>	1-3 business days
<b>Species Reactivity</b>	Mouse
<b>Predicted Reactivity</b>	Rat
<b>Format</b>	Antigen affinity purified
<b>Clonality</b>	Polyclonal (rabbit origin)
<b>Isotype</b>	Rabbit Ig
<b>Purity</b>	Antigen affinity
<b>UniProt</b>	P30280
<b>Applications</b>	Western Blot : 1:1000
<b>Limitations</b>	This CCND2 antibody is available for research use only.



CCND2 antibody western blot analysis in mouse NIH3T3 lysate. Predicted molecular weight ~33 kDa.

## Description

Regulatory component of the cyclin D2-CDK4 (DC) complex that phosphorylates and inhibits members of the retinoblastoma (RB) protein family including RB1 and regulates the cell-cycle during G(1)/S transition. Phosphorylation of RB1 allows dissociation of the transcription factor E2F from the RB/E2F complex and the subsequent transcription of E2F target genes which are responsible for the progression through the G(1) phase. Hypophosphorylates RB1 in early G(1) phase. Cyclin D-CDK4 complexes are major integrators of various mitogenic and antimitogenic signals. Also substrate for SMAD3, phosphorylating SMAD3 in a cell-cycle-dependent manner and repressing its transcriptional activity. Component of the ternary complex, cyclin D2/CDK4/CDKN1B, required for nuclear translocation and activity of the cyclin

D-CDK4 complex (By similarity).

## Application Notes

Titration of the CCND2 antibody may be required due to differences in protocols and secondary/substrate sensitivity.

## Immunogen

A portion of amino acids 258-285 from the mouse protein was used as the immunogen for this CCND2 antibody.

## Storage

Aliquot the CCND2 antibody and store frozen at -20oC or colder. Avoid repeated freeze-thaw cycles.