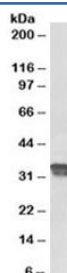


## Cyclin D1 Antibody (R36266)

Catalog No.	Formulation	Size
R36266-100UG	0.5 mg/ml in 1X TBS, pH7.3, with 0.5% BSA (US sourced) and 0.02% sodium azide	100 ug

[Bulk quote request](#)

Availability	1-3 business days
Species Reactivity	Human
Format	Antigen affinity purified
Clonality	Polyclonal (goat origin)
Isotype	Goat Ig
Purity	Antigen affinity
Gene ID	595
Applications	Western Blot : 0.5-1.5ug/ml ELISA (peptide) LOD : 1:8000
Limitations	This Cyclin D1 antibody is available for research use only.



Western blot testing of human placenta lysate with Cyclin D1 antibody at 0.5ug/ml.  
Predicted molecular weight: 32-36 kDa.

## Description

Additional name(s) for this target protein: CCND1

## Application Notes

Optimal dilution of the Cyclin D1 antibody should be determined by the researcher.

## Immunogen

Amino acids TRFLSRVIKCDPD were used as the immunogen for this Cyclin D1 antibody.

## Storage

Aliquot and store the Cyclin D1 antibody at -20oC.