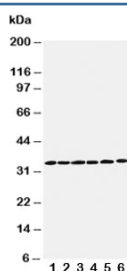


## Cyclin D1 Antibody (R30348)

Catalog No.	Formulation	Size
R30348	0.5mg/ml if reconstituted with 0.2ml sterile DI water	100 ug

**Bulk quote request**

<b>Availability</b>	1-3 business days
<b>Species Reactivity</b>	Human, Mouse, Rat
<b>Format</b>	Antigen affinity purified
<b>Clonality</b>	Polyclonal (rabbit origin)
<b>Isotype</b>	Rabbit IgG
<b>Purity</b>	Antigen affinity
<b>Buffer</b>	Lyophilized from 1X PBS with 2.5% BSA and 0.025% sodium azide/thimerosal
<b>UniProt</b>	P25322
<b>Applications</b>	Western Blot : 0.5-1ug/ml
<b>Limitations</b>	This Cyclin D1 antibody is available for research use only.



Western blot testing of Cyclin D1 antibody and Lane 1: rat testis; 2: rat ovary; 3: rat brain; 4: HeLa; 5: MM231; 6: SW620 cell lysate. Predicted molecular weight: 32-36 kDa.

## Description

D-type cyclins are regarded as essential links between cell environment and the core cell cycle machinery. Cyclin D1, the product of the human gene CCND1, is also known as BCL1. Cyclin D1 expression is regulated by the retinoblastoma protein. Expression of Cyclin D1, but not of cyclins A and E, was induced by transfection of the RB gene into RB-deficient tumor cells. The CCND1 gene can function as an oncogene.

## Application Notes

The stated application concentrations are suggested starting points. Titration of the Cyclin D1 antibody may be required due to differences in protocols and secondary/substrate sensitivity.

## Immunogen

Amino acids 219-238 (SPNNFLSCYRTTHFLSRVIK) were used as the immunogen for this Cyclin D1 antibody.

## Storage

After reconstitution, the Cyclin D1 antibody can be stored for up to one month at 4°C. For long-term, aliquot and store at -20°C. Avoid repeated freezing and thawing.