

Cyclin D1 Antibody PE Conjugate [clone SPM587] (V2830PE)

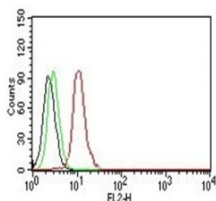
| Catalog No. | Formulation | Size |
|--------------|---|-----------|
| V2830PE-100T | 500 ul at 0.1 mg/ml with 0.1 mg/ml BSA (US sourced), 0.05% sodium azide | 100 Tests |



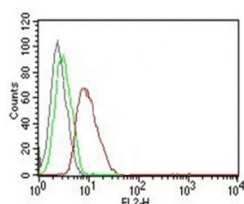
Citations (1)

[Bulk quote request](#)

| | |
|--------------------|--|
| Availability | 1-3 business days |
| Species Reactivity | Human |
| Format | PE Conjugate |
| Host | Mouse |
| Clonality | Monoclonal (mouse origin) |
| Isotype | Mouse IgG2a, kappa |
| Clone Name | SPM587 |
| Purity | Protein G affinity chromatography |
| UniProt | P24385 |
| Localization | Nuclear |
| Applications | Flow Cytometry : 5ul per test per one million cells in 100ul |
| Limitations | This Cyclin D1 antibody is available for research use only. |



Flow Cytometry testing of Jurkat cells. Black: cells alone; Green: isotype control; Red: PE-labeled Cyclin D1 antibody (SPM587).



Flow Cytometry testing of MCF-7 cells. Black: cells alone; Green: isotype control; Red: PE-labeled Cyclin D1 antibody (SPM587).

Description

Cyclin D1, one of the key cell cycle regulators, is a putative proto-oncogene overexpressed in a wide variety of human neoplasms. This antibody neutralizes the activity of cyclin D1 in vivo. About 60% of mantle cell lymphomas (MCL) contain a t(11; 14)(q13; q32) translocation resulting in over-expression of cyclin D1. This antibody is useful in identifying mantle cell lymphomas (cyclin D1 positive) from CLL/SLL and follicular lymphomas (cyclin D1 negative). Occasionally, hairy cell leukemia and plasma cell myeloma weakly express Cyclin D1.

Application Notes

Optimal dilution of the Cyclin D1 antibody should be determined by the researcher.

Immunogen

Human recombinant full length protein was used as the immunogen for the Cyclin D1 antibody.

Storage

Store the Cyclin D1 antibody at 2-8°C. Conjugate is light sensitive, store in the dark.