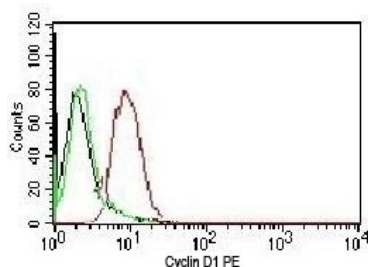


## Cyclin D1 Antibody / PE Conjugate [clone BCLD1-1] (V7043PE)

Catalog No.	Formulation	Size
V7043PE-100T	500 ul at 0.1 mg/ml with 0.1 mg/ml BSA (US sourced), 0.05% sodium azide	100 Tests

[Bulk quote request](#)

Availability	1-3 business days
Species Reactivity	Human
Format	PE Conjugate
Host	Mouse
Clonality	Monoclonal (mouse origin)
Isotype	Mouse IgG2a, kappa
Clone Name	BCLD1-1
Purity	Protein G affinity chromatography
Buffer	1X PBS, pH 7.4
Gene ID	595
Localization	Nuclear
Applications	Flow Cytometry : 5ul/test/million cells or 5ul/test/100ul of whole blood
Limitations	This Cyclin D1 antibody is available for research use only.



FACS testing of human HeLa cells: Black=cells alone; Green=isotype control; Red=Cyclin D1 antibody

## Description

This antibody recognizes a protein of 36kDa, identified as Cyclin D1. Cyclin D1, one of the key cell cycle regulators, is a putative proto-oncogene overexpressed in a wide variety of human neoplasms. This antibody neutralizes the activity of cyclin D1 in vivo. About 60% of mantle cell lymphomas (MCL) contain a t(11; 14)(q13; q32) translocation resulting in over-

expression. The antibody is useful in identifying mantle cell lymphomas (Cyclin D1 positive) from CLL/SLL and follicular lymphomas (Cyclin D1 negative). Occasionally, hairy cell leukemia and plasma cell myeloma weakly express Cyclin D1.

## **Application Notes**

The dilution stated for each application is a general starting point. Variations in protocols, secondaries and substrates may require the Cyclin D1 antibody to be titered up or down for optimal performance.

## **Immunogen**

Human recombinant full length Cyclin D1 protein was used as the immunogen.

## **Storage**

Store the Cyclin D1 antibody at 2-8°C. Conjugate is light sensitive, store in the dark.

## **Alternate Names**

Bcl-1, Bcl1