

Cyclin D1 Antibody [clone DCS-6] (V2006)

Catalog No.	Formulation	Size
V2006-100UG	0.2 mg/ml in 1X PBS with 0.1 mg/ml BSA (US sourced) and 0.05% sodium azide	100 ug
V2006-20UG	0.2 mg/ml in 1X PBS with 0.1 mg/ml BSA (US sourced) and 0.05% sodium azide	20 ug
V2006SAF-100UG	1 mg/ml in 1X PBS; BSA free, sodium azide free	100 ug
V2006IHC-7ML	Prediluted in 1X PBS with 0.1 mg/ml BSA (US sourced) and 0.05% sodium azide; *For IHC use only*	7 ml

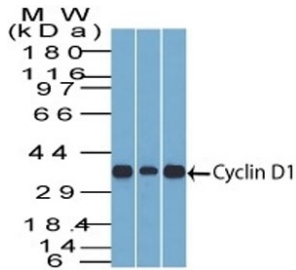
 [Citations \(22\)](#)

[Bulk quote request](#)

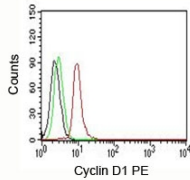
Species Reactivity	Human, Mouse, Rat
Format	Purified
Host	Mouse
Clonality	Monoclonal (mouse origin)
Isotype	Mouse IgG2a, kappa
Clone Name	DCS-6
Purity	Protein G affinity chromatography
Buffer	1X PBS, pH 7.4
Gene ID	595
Localization	Nuclear
Applications	Flow Cytometry : 1-2ug/10 ⁶ cells Immunofluorescence : 1-2ug/ml Western Blot : 1-2ug/ml Immunohistochemistry (FFPE) : 1-2ug/ml for 30 min at RT
Limitations	This Cyclin D1 antibody is available for research use only.



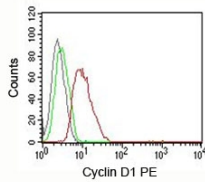
IHC testing of human mantle cell lymphoma stained with Cyclin D1 antibody. Nuclear staining of tumor cells is seen.



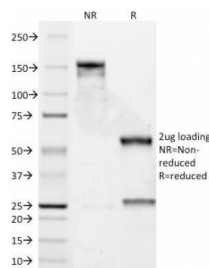
Western blot testing of mouse C2C12, human HepG2 and mouse NIH 3T3 cell lysate with DCS-6 mAb. Predicted molecular weight: 32-36 kDa.



FACS testing of Jurkat cells: Black=cells alone; Green=isotype control; Red=[Cyclin D1 antibody PE conjugate \(V2006PE\)](#)



FACS testing of MCF-7 cells: Black=cells alone; Green=isotype control; Red=[Cyclin D1 antibody PE conjugate \(V2006PE\)](#)



SDS-PAGE Analysis of Purified, BSA-Free Cyclin D1 Antibody (DCS-6). Confirmation of Integrity and Purity of the Antibody.

Description

This antibody recognizes a protein of 36kDa, identified as Cyclin D1. It is a putative proto-oncogene overexpressed in a wide variety of human neoplasms and a key cell cycle regulator. This antibody neutralizes the activity of Cyclin D1 in vivo. About 60% of mantle cell lymphomas (MCL) contain a t(11; 14)(q13; q32) translocation resulting in over-expression. Cyclin D1 antibody is useful in identifying mantle cell lymphomas, which stain positive, from CLL/SLL and follicular lymphomas, which stain negative. Occasionally, hairy cell leukemia and plasma cell myeloma weakly express Cyclin D1.

Application Notes

The concentration stated for each application is a general starting point. Variations in protocols, secondaries and

substrates may require the Cyclin D1 antibody to be titered up or down for optimal performance.

1. Staining of formalin-fixed tissues requires boiling tissue sections in 10mM citrate buffer, pH 6.0, for 10-20 min followed by cooling at RT for 20 minutes.
2. The prediluted format is supplied in a dropper bottle and is optimized for use in IHC. After epitope retrieval step (if required), drip mAb solution onto the tissue section and incubate at RT for 30 min.

Immunogen

Human recombinant full length protein was used as the immunogen for this Cyclin D1 antibody.

Storage

Store the Cyclin D1 antibody at 2-8oC (with azide) or aliquot and store at -20oC or colder (without azide).

Alternate Names

Bcl-1, Bcl1

References (3)