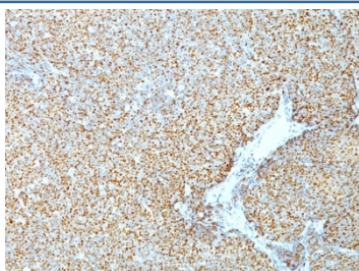


## Cyclin D1 Antibody [clone CCND1/809] (V2831)

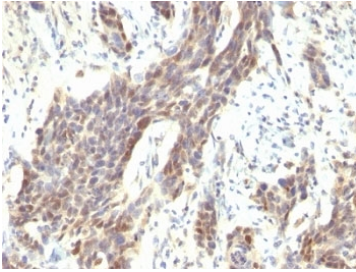
Catalog No.	Formulation	Size
V2831-100UG	0.2 mg/ml in 1X PBS with 0.1 mg/ml BSA (US sourced) and 0.05% sodium azide	100 ug
V2831-20UG	0.2 mg/ml in 1X PBS with 0.1 mg/ml BSA (US sourced) and 0.05% sodium azide	20 ug
V2831SAF-100UG	1 mg/ml in 1X PBS; BSA free, sodium azide free	100 ug
V2831IHC-7ML	Prediluted in 1X PBS with 0.1 mg/ml BSA (US sourced) and 0.05% sodium azide; *For IHC use only*	7 ml

[Bulk quote request](#)

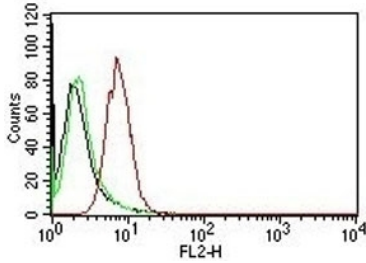
<b>Availability</b>	1-3 business days
<b>Species Reactivity</b>	Human
<b>Format</b>	Purified
<b>Clonality</b>	Monoclonal (mouse origin)
<b>Isotype</b>	Mouse IgG2a, kappa
<b>Clone Name</b>	CCND1/809
<b>Purity</b>	Protein G affinity chromatography
<b>UniProt</b>	P24385
<b>Localization</b>	Nuclear
<b>Applications</b>	Flow Cytometry : 0.5-1ug/million cells Immunohistochemistry (FFPE) : 0.5-1ug/ml for 30 min at RT
<b>Limitations</b>	This Cyclin D1 antibody is available for research use only.



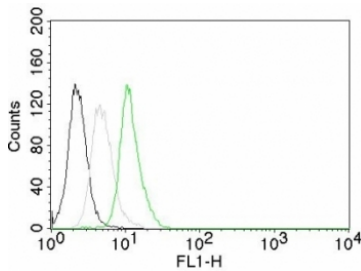
IHC: Formalin-fixed, paraffin-embedded human mantle cell lymphoma stained with Cyclin D1 antibody (CCND1/809).



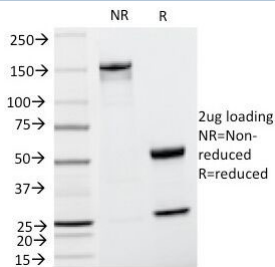
IHC: Formalin-fixed, paraffin-embedded human bladder carcinoma stained with Cyclin D1 antibody (CCND1/809).



Flow cytometry of human HeLa cells. Black: cells alone; Green: isotype control; Red: [PE-labeled Cyclin D1 antibody \(CCND1/809\)](#).



Flow cytometry of human Jurkat cells. Black: cells alone; Grey: isotype control; Green: AF488-labeled Cyclin D1 antibody (CCND1/809).



SDS-PAGE Analysis of Purified, BSA-Free Cyclin D1 Antibody (clone CCND1/809). Confirmation of Integrity and Purity of the Antibody.

## Description

Recognizes a protein of 36kDa, identified as cyclin D1. Cyclin D1, one of the key cell cycle regulators, is a putative proto-oncogene overexpressed in a wide variety of human neoplasms. This antibody neutralizes the activity of cyclin D1 in vivo. About 60% of mantle cell lymphomas (MCL) contain a t(11; 14)(q13; q32) translocation resulting in over-expression of cyclin D1. This antibody is useful in identifying mantle cell lymphomas (cyclin D1 positive) from CLL/SLL and follicular lymphomas (cyclin D1 negative). Occasionally, hairy cell leukemia and plasma cell myeloma weakly express Cyclin D1.

## Application Notes

Optimal dilution of the Cyclin D1 antibody should be determined by the researcher.

1. Staining of formalin-fixed tissues requires boiling tissue sections in 10mM Citrate buffer, pH 6.0, for 10-20 min followed by cooling at RT for 20 min.
2. The prediluted format is supplied in a dropper bottle and is optimized for use in IHC. After epitope retrieval step (if required), drip mAb solution onto the tissue section and incubate at RT for 30 min.

## Immunogen

Recombinant human protein was used as the immunogen for the Cyclin D1 antibody.

## Storage

Store the Cyclin D1 antibody at 2-8oC (with azide) or aliquot and store at -20oC or colder (without azide).