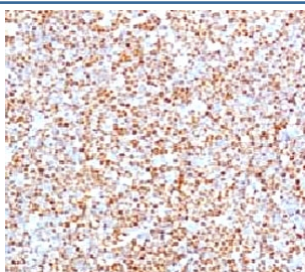


Cyclin D1 Antibody [clone BCLD1-1] (V7043)

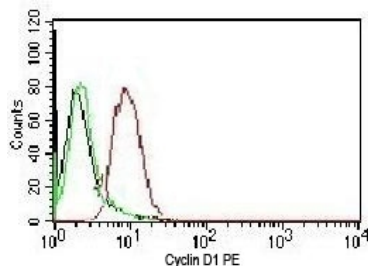
Catalog No.	Formulation	Size
V7043-100UG	0.2 mg/ml in 1X PBS with 0.1 mg/ml BSA (US sourced) and 0.05% sodium azide	100 ug
V7043-20UG	0.2 mg/ml in 1X PBS with 0.1 mg/ml BSA (US sourced) and 0.05% sodium azide	20 ug
V7043SAF-100UG	1 mg/ml in 1X PBS; BSA free, sodium azide free	100 ug
V7043IHC-7ML	Prediluted in 1X PBS with 0.1 mg/ml BSA (US sourced) and 0.05% sodium azide; *For IHC use only*	7 ml

[Bulk quote request](#)

Availability	1-3 business days
Species Reactivity	Human
Format	Purified
Host	Mouse
Clonality	Monoclonal (mouse origin)
Isotype	Mouse IgG2a, kappa
Clone Name	BCLD1-1
Purity	Protein G affinity chromatography
UniProt	P24385
Localization	Nuclear
Applications	Flow Cytometry : 0.5-1ug/million cells in 0.1ml Immunohistochemistry (FFPE) : 0.5-1ug/ml for 30 min at RT (1) Prediluted IHC Only Format : incubate for 30 min at RT (2)
Limitations	This Cyclin D1 antibody is available for research use only.



IHC testing of human mantle cell lymphoma and Cyclin D1 antibody (clone BCLD1-1).



Flow cytometry of human HeLa cells. Black: cells alone; Green: isotype control; Red: [PE-labeled Cyclin D1 antibody \(clone BCLD1-1\)](#).

Description

Recognizes a protein of 36kDa, identified as cyclin D1. Cyclin D1, one of the key cell cycle regulators, is a putative proto-oncogene overexpressed in a wide variety of human neoplasms. This antibody neutralizes the activity of cyclin D1 in vivo. About 60% of mantle cell lymphomas (MCL) contain a t(11; 14)(q13; q32) translocation resulting in over-expression of cyclin D1. This antibody is useful in identifying mantle cell lymphomas (cyclin D1 positive) from CLL/SLL and follicular lymphomas (cyclin D1 negative). Occasionally, hairy cell leukemia and plasma cell myeloma weakly express Cyclin D1.

Application Notes

Optimal dilution of the Cyclin D1 antibody should be determined by the researcher.

1. Staining of formalin-fixed tissues requires boiling tissue sections in 10mM Citrate buffer, pH 6.0, for 10-20 min followed by cooling at RT for 20 min.
2. The prediluted format is supplied in a dropper bottle and is optimized for use in IHC. After epitope retrieval step (if required), drip mAb solution onto the tissue section and incubate at RT for 30 min.

Immunogen

Recombinant human protein was used as the immunogen for the Cyclin D1 antibody.

Storage

Store the Cyclin D1 antibody at 2-8°C (with azide) or aliquot and store at -20°C or colder (without azide).