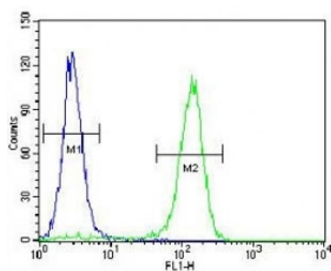


Cyclin C Antibody (CCNC) (F41289)

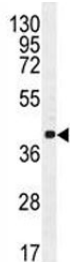
Catalog No.	Formulation	Size
F41289-0.4ML	In 1X PBS, pH 7.4, with 0.09% sodium azide	0.4 ml
F41289-0.08ML	In 1X PBS, pH 7.4, with 0.09% sodium azide	0.08 ml

[Bulk quote request](#)

Availability	1-3 business days
Species Reactivity	Human
Format	Purified
Clonality	Polyclonal (rabbit origin)
Isotype	Rabbit Ig
Purity	Purified
UniProt	P24863
Applications	Western Blot : 1:1000 Flow Cytometry : 1:10-1:50
Limitations	This Cyclin C antibody is available for research use only.



Cyclin C antibody flow cytometric analysis of HeLa cells (right histogram) compared to a negative control (left histogram). FITC-conjugated goat-anti-rabbit secondary Ab was used for the analysis.



Cyclin C antibody western blot analysis in NCI-H460 lysate. Predicted molecular weight: 33-37 kDa

Description

The protein encoded by this gene is a member of the cyclin family of proteins. The encoded protein interacts with cyclin-dependent kinase 8 and induces the phosphorylation of the carboxy-terminal domain of the large subunit of RNA polymerase II. The level of mRNAs for this gene peaks in the G1 phase of the cell cycle. Two transcript variants encoding different isoforms have been found for this gene.

Application Notes

Titration of the Cyclin C antibody may be required due to differences in protocols and secondary/substrate sensitivity.

Immunogen

A portion of amino acids 1-30 from the human protein was used as the immunogen for this Cyclin C antibody.

Storage

Aliquot the Cyclin C antibody and store frozen at -20oC or colder. Avoid repeated freeze-thaw cycles.