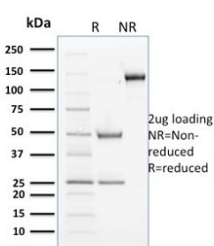


Cyclin B2 Antibody / CCNB2 [clone X29.2] (V8196)

Catalog No.	Formulation	Size
V8196-100UG	0.2 mg/ml in 1X PBS with 0.1 mg/ml BSA (US sourced) and 0.05% sodium azide	100 ug
V8196-20UG	0.2 mg/ml in 1X PBS with 0.1 mg/ml BSA (US sourced) and 0.05% sodium azide	20 ug
V8196SAF-100UG	1 mg/ml in 1X PBS; BSA free, sodium azide free	100 ug

[Bulk quote request](#)

Availability	1-3 business days
Species Reactivity	Human, Mouse, Rat
Format	Purified
Clonality	Monoclonal (mouse origin)
Isotype	Mouse IgG1, kappa
Clone Name	X29.2
Purity	Protein G affinity chromatography
UniProt	O95067
Applications	ELISA (order BSA-free Format For Coating) :
Limitations	This Cyclin B2 antibody is available for research use only.



SDS-PAGE analysis of purified, BSA-free Cyclin B2 antibody (clone X29.2) as confirmation of integrity and purity.

Description

In eukaryotic cells, mitosis is initiated following the activation of a protein kinase known variously as maturation-promoting factor, M phase specific histone kinase or M-phase kinase. This protein kinase is composed of a catalytic subunit (Cdc2), a regulatory subunit (cyclin B) and a low molecular weight subunit (p13-Suc1). The Cdc/cyclin enzyme is subject to

multiple levels of control, of which the regulation of the catalytic subunit by tyrosine phosphorylation is the best understood. Tyrosine phosphorylation inhibits the Cdc2/ cyclin B enzyme, and tyrosine dephosphorylation, occurring at the onset of mitosis, directly activates the pre-MPF complex. Evidence has established that B type cyclins not only act on M phase regulatory subunits of the Cdc2 protein kinase, but also activate the Cdc25A and Cdc25B endogenous tyrosine phosphatase, of which Cdc2 is the physiological substrate. The two B type cyclins, cyclin B1 and cyclin B2, have been shown to have distinct tissue distributions.

Application Notes

Optimal dilution of the Cyclin B2 antibody should be determined by the researcher.

Immunogen

Recombinant full-length *Xenopus laevis* Cyclin B2 protein was used as the immunogen for this Cyclin B2 antibody.

Storage

Store the Cyclin B2 antibody at 2-8°C (with azide) or aliquot and store at -20°C or colder (without azide).