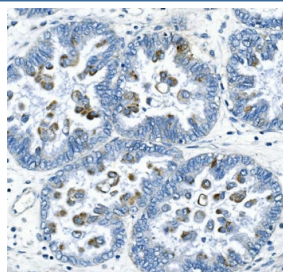


Cyclin B2 Antibody / CCNB2 (RQ5675)

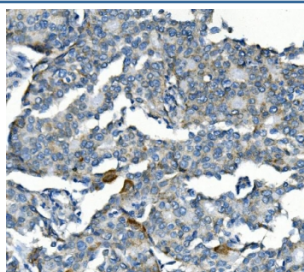
Catalog No.	Formulation	Size
RQ5675	0.5mg/ml if reconstituted with 0.2ml sterile DI water	100 ug

Bulk quote request

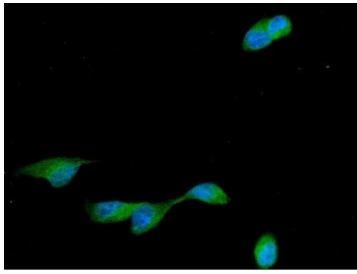
Availability	1-3 business days
Species Reactivity	Human, Mouse, Rat
Format	Antigen affinity purified
Clonality	Polyclonal
Isotype	Rabbit IgG
Purity	Affinity purified
Buffer	Lyophilized from 1X PBS with 2% Trehalose and 0.025% sodium azide
UniProt	O95067
Applications	Western Blot : 0.5-1ug/ml Immunohistochemistry : 1-2ug/ml Immunofluorescence : 2-4ug/ml Flow Cytometry : 1-3ug/million cells Direct ELISA : 0.1-0.5ug/ml
Limitations	This Cyclin B2 antibody is available for research use only.



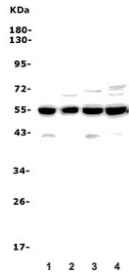
IHC staining of FFPE human ovarian cancer with Cyclin B2 antibody. HIER: boil tissue sections in pH8 EDTA for 20 min and allow to cool before testing.



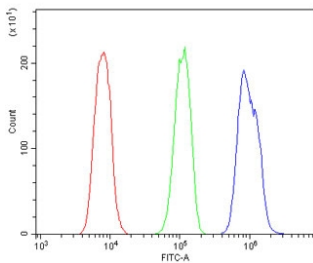
IHC staining of FFPE human breast cancer with Cyclin B2 antibody. HIER: boil tissue sections in pH8 EDTA for 20 min and allow to cool before testing.



Immunofluorescent staining of FFPE human U-2 OS cells with Cyclin B2 antibody (green) and DAPI nuclear stain (blue). HIER: steam section in pH6 citrate buffer for 20 min.



Western blot testing of 1) human HeLa, 2) human K562, 3) rat testis and 4) mouse testis lysate with Cyclin B2 antibody. Predicted molecular weight ~44 kDa.



Flow cytometry testing of human A431 cells with Cyclin B2 antibody at 1ug/million cells (blocked with goat sera); Red=cells alone, Green=isotype control, Blue= Cyclin B2 antibody.

Description

G2/mitotic-specific cyclin-B2 is a protein that in humans is encoded by the CCNB2 gene. This gene is mapped to 15q22.2. Cyclin B2 is a member of the cyclin family, specifically the B-type cyclins. The B-type cyclins, B1 and B2, associate with p34cdc2 and are essential components of the cell cycle regulatory machinery. B1 and B2 differ in their subcellular localization. Cyclin B1 co-localizes with microtubules, whereas cyclin B2 is primarily associated with the Golgi region. Cyclin B2 also binds to transforming growth factor beta RII and thus cyclin B2/cdc2 may play a key role in transforming growth factor beta-mediated cell cycle control.

Application Notes

Optimal dilution of the Cyclin B2 antibody should be determined by the researcher.

Immunogen

Recombinant human protein (amino acids K23-A391) was used as the immunogen for the Cyclin B2 antibody.

Storage

After reconstitution, the Cyclin B2 antibody can be stored for up to one month at 4oC. For long-term, aliquot and store at -20oC. Avoid repeated freezing and thawing.

