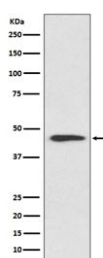


## Cyclin B2 Antibody / CCNB2 [clone GIG-3] (RQ4801)

Catalog No.	Formulation	Size
RQ4801	Antibody in PBS with 0.02% sodium azide, 50% glycerol and 0.4-0.5mg/ml BSA	100 ul

[Bulk quote request](#)

Availability	1-2 weeks
Species Reactivity	Human
Format	Purified
Clonality	Rabbit Monoclonal
Isotype	Rabbit IgG
Clone Name	GIG-3
Purity	Affinity purified
UniProt	O95067
Applications	Western Blot : 1:500-1:1000
Limitations	This Cyclin B2 antibody is available for research use only.



Western blot testing of human HeLa cell lysate with Cyclin B2 antibody. Predicted molecular weight ~44 kDa.

### Description

Cyclin B2 is a member of the cyclin family, specifically the B-type cyclins. The B-type cyclins, B1 and B2, associate with p34cdc2 and are essential components of the cell cycle regulatory machinery. B1 and B2 differ in their subcellular localization. Cyclin B1 co-localizes with microtubules, whereas cyclin B2 is primarily associated with the Golgi region. Cyclin B2 also binds to transforming growth factor beta RII and thus cyclin B2/cdc2 may play a key role in transforming growth factor beta-mediated cell cycle control. [RefSeq]

### Application Notes

Optimal dilution of the Cyclin B2 antibody should be determined by the researcher.

## **Immunogen**

A synthetic peptide specific to human Cyclin B2 / CCNB2 was used as the immunogen for the Cyclin B2 antibody.

## **Storage**

Store the Cyclin B2 antibody at -20oC.