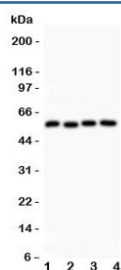


Cyclin B1 Antibody (R31529)

Catalog No.	Formulation	Size
R31529	0.5mg/ml if reconstituted with 0.2ml sterile DI water	100 ug

Bulk quote request

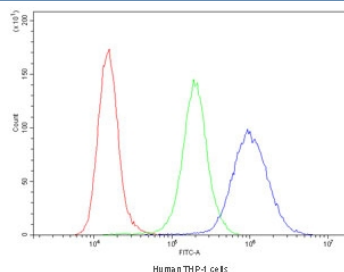
Availability	1-3 business days
Species Reactivity	Human
Format	Antigen affinity purified
Host	Rabbit
Clonality	Polyclonal (rabbit origin)
Isotype	Rabbit IgG
Purity	Antigen affinity
Buffer	Lyophilized from 1X PBS with 2.5% BSA and 0.025% sodium azide
Gene ID	891
Localization	Nuclear, cytoplasmic
Applications	Western Blot : 0.5-1ug/ml Immunofluorescence (FFPE) : 2-4ug/ml Flow Cytometry : 1-3ug/million cells
Limitations	This Cyclin B1 antibody is available for research use only.



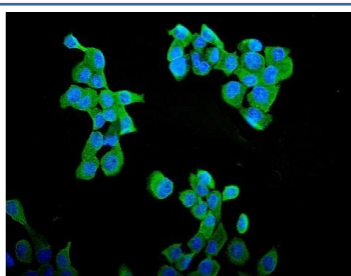
Western blot testing of Cyclin B1 antibody and Lane 1: HeLa; 2: 293T; 3: MCF-7; 4: COLO320 lysate. Predicted molecular weight: 48-60 kDa.

kDa
200 -
116 -
97 -
66 -
44 -
31 -
22 -
14 -
6 -

Western blot testing of Cyclin B1 antibody and recombinant human protein (0.5ng)



Flow cytometry testing of human THP-1 cells with Cyclin B1 antibody at 1ug/10⁶ cells (blocked with goat sera); Red=cells alone, Green=isotype control, Blue=Cyclin B1 antibody.



Immunofluorescent staining of FFPE human A431 cells with Cyclin B1 antibody (green) and DAPI nuclear stain (blue). HIER: steam section in pH6 citrate buffer for 20 min.

Description

Cyclin B1 is a protein that in humans is encoded by the CCNB1 gene, and it is mapped to 5q13.2. It is a regulatory protein involved in mitosis. The gene product complexes with [p34\(Cdc2\)](#) to form the maturation-promoting factor (MPF). Two alternative transcripts have been found, a constitutively expressed transcript and a cell cycle-regulated transcript, that is expressed predominantly during G2/M phase. The different transcripts result from the use of alternate transcription initiation sites. CCNB1 contributes to the switch-like all or none behavior of the cell in deciding to commit to mitosis. Its activation is well-regulated, and positive feedback loops ensure that once the [Cyclin B1-Cdk1](#) complex is activated, it is not deactivated.

Application Notes

The stated application concentrations are suggested starting amounts. Titration of the Cyclin B1 antibody may be required due to differences in protocols and secondary/substrate sensitivity.

Immunogen

Human partial recombinant protein (AA 1-433) was used as the immunogen for this Cyclin B1 antibody.

Storage

After reconstitution, the Cyclin B1 antibody can be stored for up to one month at 4oC. For long-term, aliquot and store at -20oC. Avoid repeated freezing and thawing.

