

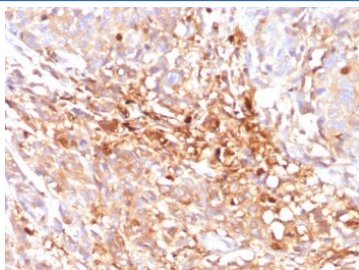
Cyclin B1 Antibody [clone CCNB1/7030R] (V5484)

Catalog No.	Formulation	Size
V5484-100UG	0.2 mg/ml in 1X PBS with 0.1 mg/ml BSA (US sourced), 0.05% sodium azide	100 ug
V5484-20UG	0.2 mg/ml in 1X PBS with 0.1 mg/ml BSA (US sourced), 0.05% sodium azide	20 ug
V5484SAF-100UG	1 mg/ml in 1X PBS; BSA free, sodium azide free	100 ug

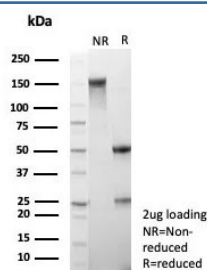
Recombinant **RABBIT MONOCLONAL**

[Bulk quote request](#)

Availability	1-3 business days
Species Reactivity	Human
Format	Purified
Clonality	Recombinant Rabbit Monoclonal
Isotype	Rabbit IgG, kappa
Clone Name	CCNB1/7030R
Purity	Protein A/G affinity
UniProt	P14635
Localization	Nuclear, cytoplasmic
Applications	Immunohistochemistry (FFPE) : 1-2ug/ml ELISA :
Limitations	This Cyclin B1 antibody is available for research use only.



IHC staining of FFPE human triple negative breast cancer tissue with Cyclin B1 antibody (clone CCNB1/7030R). HIER: boil tissue sections in pH 9 10mM Tris with 1mM EDTA for 20 min and allow to cool before testing.



SDS-PAGE analysis of purified, BSA-free Cyclin B1 antibody (clone CCNB1/7030R) as confirmation of integrity and purity.

Description

It recognizes a protein of 55-62kDa, identified as cyclin B1. In mammals, cyclin B associates with inactive p34cdc2, which facilitates phosphorylation of p34cdc2 at aa 14Thr and 15Tyr. This maintains the inactive state until the end of G2-phase. The inactive cyclin B-p34cdc2 complex continues to accumulate in the cytoplasm until the completion of DNA synthesis, when Cdc25, a specific protein phosphatase, dephosphorylates aa 14Thr and 15Tyr of p34cdc2 rendering the complex active at the G2/M boundary. This mitotic kinase complex remains active until the metaphase/anaphase transition when cyclin B is degraded. This degradation process is ubiquitin-dependent and is necessary for the cell to exit mitosis. So, cyclin B-p34cdc2 plays a critical role in G2 to M transition.

Application Notes

Optimal dilution of the Cyclin B1 antibody should be determined by the researcher.

Immunogen

Recombinant full-length human CCNB1 protein was used as the immunogen for the Cyclin B1 antibody.

Storage

Aliquot the Cyclin B1 antibody and store frozen at -20oC or colder. Avoid repeated freeze-thaw cycles.