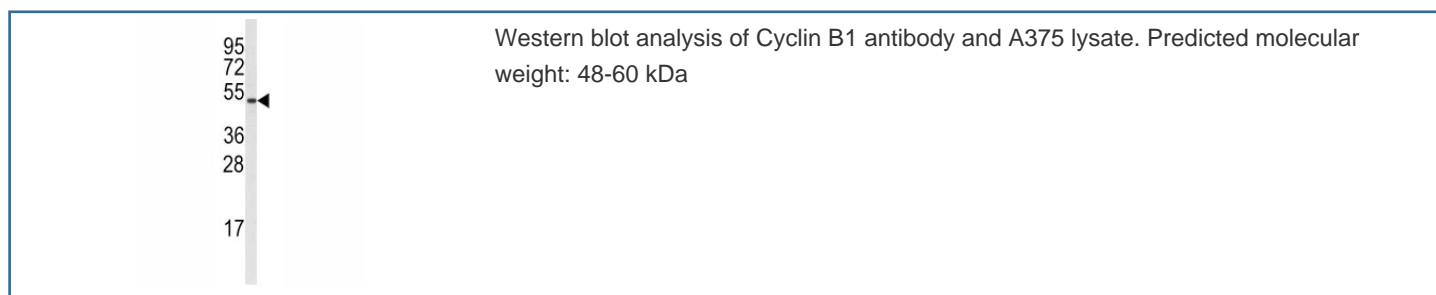


Cyclin B1 Antibody (CCNB1) (F50546)

Catalog No.	Formulation	Size
F50546-0.4ML	In 1X PBS, pH 7.4, with 0.09% sodium azide	0.4 ml
F50546-0.08ML	In 1X PBS, pH 7.4, with 0.09% sodium azide	0.08 ml

[Bulk quote request](#)

Availability	1-3 business days
Species Reactivity	Human
Format	Antigen affinity purified
Host	Rabbit
Clonality	Polyclonal (rabbit origin)
Isotype	Rabbit Ig
Purity	Antigen affinity
UniProt	P14635
Localization	Nuclear, cytoplasmic
Applications	Western Blot : 1:1000
Limitations	This Cyclin B1 antibody is available for research use only.



Description

Cyclin B1 is a regulatory protein involved in mitosis. It complexes with p34(cdc2) to form the maturation-promoting factor (MPF).

Application Notes

Titration of the Cyclin B1 antibody may be required due to differences in protocols and secondary/substrate sensitivity.

Immunogen

A portion of amino acids 104-133 from the human protein was used as the immunogen for this Cyclin B1 antibody.

Storage

Aliquot the Cyclin B1 antibody and store frozen at -20oC or colder. Avoid repeated freeze-thaw cycles.