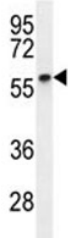


Cyclin B1 Antibody (CCNB1) (F41196)

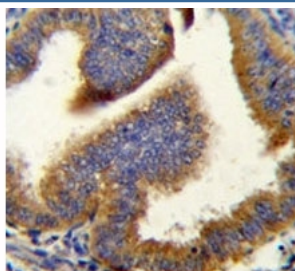
Catalog No.	Formulation	Size
F41196-0.4ML	In 1X PBS, pH 7.4, with 0.09% sodium azide	0.4 ml
F41196-0.08ML	In 1X PBS, pH 7.4, with 0.09% sodium azide	0.08 ml

[Bulk quote request](#)

Availability	1-3 business days
Species Reactivity	Human
Format	Purified
Clonality	Polyclonal (rabbit origin)
Isotype	Rabbit Ig
Purity	Purified
UniProt	P14635
Localization	Nuclear, cytoplasmic
Applications	Western Blot : 1:1000 IHC (Paraffin) : 1:50-1:100
Limitations	This Cyclin B1 antibody is available for research use only.



Cyclin B1 antibody western blot analysis in MDA-MB231 lysate. Predicted molecular weight: 48-60 kDa



Cyclin B1 antibody immunohistochemistry analysis in formalin fixed and paraffin embedded human uterus tissue.

Description

The protein encoded by this gene is a regulatory protein involved in mitosis. The gene product complexes with p34(cdc2) to form the maturation-promoting factor (MPF). Two alternative transcripts have been found, a constitutively expressed transcript and a cell cycle-regulated transcript, that is expressed predominantly during G2/M phase. The different transcripts result from the use of alternate transcription initiation sites. [provided by RefSeq].

Application Notes

The stated application concentrations are suggested starting amounts. Titration of the Cyclin B1 antibody may be required due to differences in protocols and secondary/substrate sensitivity.

Immunogen

A portion of amino acids 381-411 from the human protein was used as the immunogen for this Cyclin B1 antibody.

Storage

Store at 4oC for up to one month. For long term, aliquot the Cyclin B1 antibody and store frozen at -20oC or colder. Avoid repeated freeze-thaw cycles.