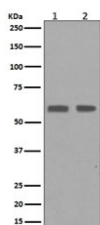


## Cyclin B1 Antibody / CCNB1 [clone CIC-3] (RQ5431)

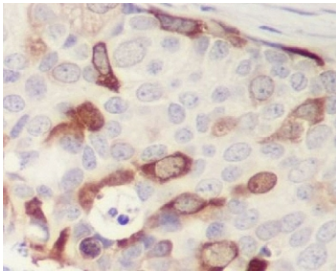
Catalog No.	Formulation	Size
RQ5431	Antibody in PBS with 0.02% sodium azide, 50% glycerol and 0.4-0.5mg/ml BSA	100 ul

[Bulk quote request](#)

Availability	1-2 weeks
Species Reactivity	Human
Format	Purified
Host	Rabbit
Clonality	Rabbit Monoclonal
Isotype	Rabbit IgG
Clone Name	CIC-3
Purity	Affinity purified
UniProt	P14635
Localization	Cytoplasmic, nuclear
Applications	Western Blot : 1:1000-1:2000 Immunohistochemistry (FFPE) : 1:50-1:200
Limitations	This Cyclin B1 antibody is available for research use only.



Western blot testing of human 1) HaCat and 2) HepG2 cell lysate with Cyclin B1 antibody. Predicted molecular weight: 48-60 kDa.



IHC staining of FFPE human breast cancer with Cyclin B1 antibody. HIER: boil tissue sections in pH6, 10mM citrate buffer, for 10-20 min and allow to cool before testing.

## Description

The protein encoded by the CCNB1 gene is a regulatory protein involved in mitosis. The gene product complexes with p34(cdc2) to form the maturation-promoting factor (MPF). The encoded protein is necessary for proper control of the G2/M transition phase of the cell cycle. [RefSeq]

## Application Notes

Optimal dilution of the Cyclin B1 antibody should be determined by the researcher.

## Immunogen

A synthetic peptide specific to human Cyclin B1 / CCNB1 was used as the immunogen for the Cyclin B1 antibody.

## Storage

Store the Cyclin B1 antibody at -20oC.