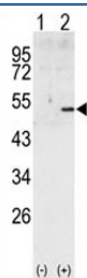


## Cyclin A2 Antibody (CCNA2) (F50282)

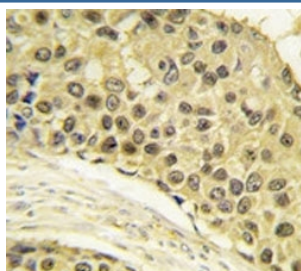
Catalog No.	Formulation	Size
F50282-0.4ML	In 1X PBS, pH 7.4, with 0.09% sodium azide	0.4 ml
F50282-0.08ML	In 1X PBS, pH 7.4, with 0.09% sodium azide	0.08 ml

**Bulk quote request**

<b>Availability</b>	1-3 business days
<b>Species Reactivity</b>	Human
<b>Format</b>	Purified
<b>Clonality</b>	Polyclonal (rabbit origin)
<b>Isotype</b>	Rabbit Ig
<b>Purity</b>	Purified
<b>UniProt</b>	P20248
<b>Applications</b>	Western Blot : 1:1000 IHC (Paraffin) : 1:10-1:50
<b>Limitations</b>	This Cyclin A2 antibody is available for research use only.



Western blot analysis of Cyclin A2 antibody and 293 cell lysate (2 ug/lane) either nontransfected (Lane 1) or transiently transfected with the human gene (2). Predicted molecular weight ~50 kDa



IHC analysis of FFPE human breast carcinoma tissue stained with Cyclin A2 antibody

## Description

CCNA2 belongs to the highly conserved cyclin family, whose members are characterized by a dramatic periodicity in protein abundance through the cell cycle. Cyclins function as regulators of CDK kinases. Different cyclins exhibit distinct expression and degradation patterns which contribute to the temporal coordination of each mitotic event. In contrast to cyclin A1, which is present only in germ cells, this cyclin is expressed in all tissues tested. This cyclin binds and activates CDC2 or CDK2 kinases, and thus promotes both cell cycle G1/S and G2/M transitions.

## Application Notes

Titration of the Cyclin A2 antibody may be required due to differences in protocols and secondary/substrate sensitivity.

## Immunogen

A portion of amino acids 358-389 from the human protein was used as the immunogen for this Cyclin A2 antibody.

## Storage

Aliquot the Cyclin A2 antibody and store frozen at -20oC or colder. Avoid repeated freeze-thaw cycles.