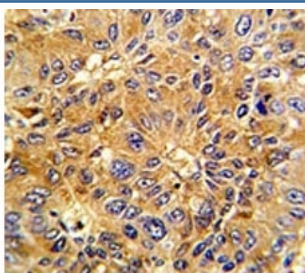


Cyclin A2 Antibody (CCNA2) (F50281)

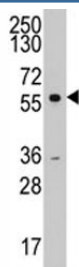
Catalog No.	Formulation	Size
F50281-0.4ML	In 1X PBS, pH 7.4, with 0.09% sodium azide	0.4 ml
F50281-0.08ML	In 1X PBS, pH 7.4, with 0.09% sodium azide	0.08 ml

[Bulk quote request](#)

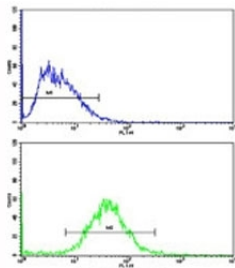
Availability	1-3 business days
Species Reactivity	Human
Format	Purified
Clonality	Polyclonal (rabbit origin)
Isotype	Rabbit Ig
Purity	Purified
UniProt	P20248
Applications	Western Blot : 1:1000 IHC (Paraffin) : 1:50-1:100 Flow Cytometry : 1:10-1:50
Limitations	This Cyclin A2 antibody is available for research use only.



IHC analysis of FFPE human hepatocarcinoma with Cyclin A2 antibody



Western blot analysis of Cyclin A2 antibody and K562 lysate. Predicted molecular weight ~50 kDa



Flow cytometric analysis of HepG2 cells using Cyclin A2 antibody (bottom histogram) compared to a negative control (top histogram). FITC-conjugated goat-anti-rabbit secondary Ab was used for the analysis.

Description

CCNA2 is essential for the control of the cell cycle at the G1/S (start) and the G2/M (mitosis) transitions. [UniProt]

Application Notes

The stated application concentrations are suggested starting amounts. Titration of the Cyclin A2 antibody may be required due to differences in protocols and secondary/substrate sensitivity.

Immunogen

A portion of amino acids 51-84 from the human protein was used as the immunogen for this Cyclin A2 antibody.

Storage

Store at 4oC for up to one month. For long term, aliquot the Cyclin A2 antibody and store frozen at -20oC or colder. Avoid repeated freeze-thaw cycles.