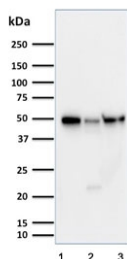


## Cyclin A1 Antibody / CCNA1 [clone XLA1-3] (V8293)

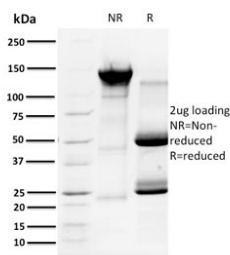
| Catalog No.    | Formulation  | Size   |
|----------------|--|--------|
| V8293-100UG    | 0.2 mg/ml in 1X PBS with 0.1 mg/ml BSA (US sourced) and 0.05% sodium azide | 100 ug |
| V8293-20UG     | 0.2 mg/ml in 1X PBS with 0.1 mg/ml BSA (US sourced) and 0.05% sodium azide | 20 ug  |
| V8293SAF-100UG | 1 mg/ml in 1X PBS; BSA free, sodium azide free                             | 100 ug |

**Bulk quote request**

|                           |   |
|---------------------------|---|
| <b>Availability</b>       | 1-3 business days   |
| <b>Species Reactivity</b> | Xenopus laevis, Human                                       |
| <b>Format</b>             | Purified  |
| <b>Clonality</b>          | Monoclonal (mouse origin)                                   |
| <b>Isotype</b>            | Mouse IgG1, kappa   |
| <b>Clone Name</b>         | XLA1-3  |
| <b>Purity</b>             | Protein G affinity chromatography                           |
| <b>UniProt</b>            | P78396  |
| <b>Applications</b>       | Western Blot : 1-2ug/ml                                     |
| <b>Limitations</b>        | This Cyclin A1 antibody is available for research use only. |



Western blot testing of human 1) HeLa, 2) Jurkat and 3) MCF7 cell lysate with Cyclin A1 antibody. Expected molecular weight: 50-55 kDa.



SDS-PAGE analysis of purified, BSA-free Cyclin A1 antibody (clone XLA1-3) as confirmation of integrity and purity.

## Description

The critical role that the family of regulatory proteins known as cyclins play in eukaryotic cell cycle regulation is well established. The best-characterized cyclin complex is the mitotic cyclin B/Cdc2 p34 kinase, the active component of maturing promoting factor. Cyclin A accumulates prior to cyclin B in the cell cycle, appears to be involved in control of S phase and has been shown to associate with cyclin-dependent kinase-2 (Cdk2). In addition, cyclin A has been implicated in cell transformation and is found in complexes with E1A, transcription factors DRTF1 and E2F, and retinoblastoma protein p110. A second form of cyclin A, named cyclin A1 because of its high sequence homology to *Xenopus* cyclin A1, is most highly expressed in germ cells. It has been proposed that cyclin A1 can associate with Cdk2, p39 and Cdc2 p34. The antibody detects *Xenopus* cyclin A in blots. Cyclin A1 is the embryonic cyclin which is present in *Xenopus* eggs.

## Application Notes

Optimal dilution of the Cyclin A1 antibody should be determined by the researcher.

## Immunogen

Recombinant full-length *Xenopus laevis* Cyclin A1 protein was used as the immunogen for the Cyclin A1 antibody.

## Storage

Store the Cyclin A1 antibody at 2-8°C (with azide) or aliquot and store at -20°C or colder (without azide).