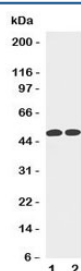


## Cyclin A Antibody [clone CY-A1] (R30028)

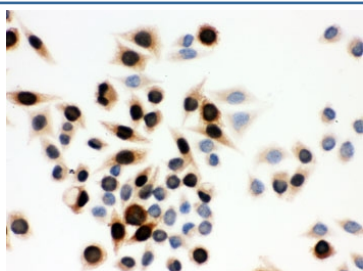
Catalog No.	Formulation	Size
R30028	0.5mg/ml with 1% BSA and 0.01% sodium azide if reconstituted with 0.2ml sterile 1X PBS	100 ug

[Bulk quote request](#)

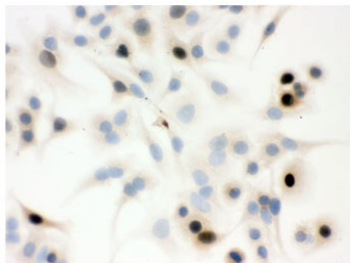
Availability	1-3 business days
Species Reactivity	Human, Mouse, Bovine
Format	Ascites
Clonality	Monoclonal (mouse origin)
Isotype	Mouse IgG2a
Clone Name	CY-A1
Purity	Ascites
Gene ID	890
Applications	Western Blot : 0.5-1ug/ml Immunocytochemistry : 1ug/ml
Limitations	This Cyclin A antibody is available for research use only.



Western blot testing of Cyclin A antibody and Lane 1: HeLa; 2: Jurkat cell lysate.  
Predicted molecular weight: 50-55 kDa.



ICC testing of human SMMC-7721 cells with Cyclin A antibody.



ICC testing of human A549 cells with Cyclin A antibody.

## Description

The mammalian A-type cyclin family consists of 2 members, Cyclin A1 (CCNA1) and Cyclin A2 (CCNA2). Human cyclin A gene is assigned to 4q26-q27. Cyclin A protein is synthesized and localized into the nucleus at the onset of S phase in nontransformed mammalian fibroblasts.

## Application Notes

The stated application concentrations are suggested starting amounts. Titration of the Cyclin A antibody may be required due to differences in protocols and secondary/substrate sensitivity.

## Immunogen

Recombinant bovine cyclin A was used as the immunogen for this Cyclin A antibody.

## Storage

After reconstitution, the Cyclin A antibody can be stored for up to one month at 4°C. For long-term, aliquot and store at -20°C. Avoid repeated freezing and thawing.