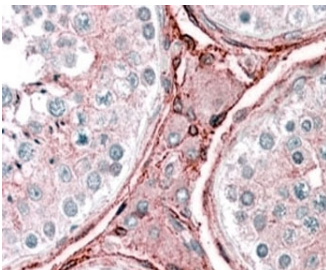


CYBRD1 Antibody (R33328)

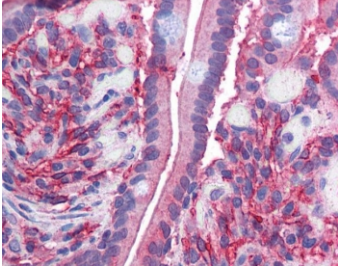
Catalog No.	Formulation	Size
R33328-100UG	0.5 mg/ml in 1X TBS, pH7.3, with 0.5% BSA (US sourced) and 0.02% sodium azide	100 ug

[Bulk quote request](#)

Availability	1-3 business days
Species Reactivity	Human, Mouse
Predicted Reactivity	Dog, Pig, Cow
Format	Antigen affinity purified
Host	Goat
Clonality	Polyclonal (goat origin)
Isotype	Goat Ig
Purity	Antigen affinity
Gene ID	79901
Applications	Western Blot : 2.5-5ug/ml Immunohistochemistry (FFPE) : 2-5ug/ml ELISA (peptide) LOD : 1:16000
Limitations	This CYBRD1 antibody is available for research use only.



IHC testing of FFPE human testis with CYBRD1 antibody at 2.5ug/ml. HIER: steamed with pH6 citrate buffer, AP-staining.



IHC testing of FFPE human small intestine tissue with CYBRD1 antibody at 2.5ug/ml.
HIER: steamed with pH6 citrate buffer, AP-staining.

Description

Additional name(s) for this target protein: Cytochrome b reductase 1

Application Notes

Optimal dilution of the CYBRD1 antibody should be determined by the researcher.

1. This CYBRD1 antibody is specific for isoform 1 only.

Immunogen

Amino acids CRNLALDEAGQRSTM were used as the immunogen for this CYBRD1 antibody.

Storage

Aliquot and store the CYBRD1 antibody at -20oC.