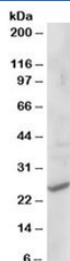


CYB561D2 Antibody (R36341)

Catalog No.	Formulation	Size
R36341-100UG	0.5 mg/ml in 1X TBS, pH7.3, with 0.5% BSA (US sourced) and 0.02% sodium azide	100 ug

[Bulk quote request](#)

Availability	1-3 business days
Species Reactivity	Human
Predicted Reactivity	Cow, Dog, Mouse, Rat
Format	Antigen affinity purified
Host	Goat
Clonality	Polyclonal (goat origin)
Isotype	Goat Ig
Purity	Antigen affinity
Gene ID	11068
Applications	Western Blot : 1-3ug/ml ELISA (peptide) LOD : 1:16000
Limitations	This CYB561D2 antibody is available for research use only.



Western blot testing of human liver lysate with CYB561D2 antibody at 1ug/ml.
Predicted/observed molecular weight: ~25kDa.

Description

Additional name(s) for this target protein: Cytochrome b-561 domain containing 2

Application Notes

Optimal dilution of the CYB561D2 antibody should be determined by the researcher.

Immunogen

Amino acids VSNAYLYRKRIQP were used as the immunogen for this CYB561D2 antibody.

Storage

Aliquot and store the CYB561D2 antibody at -20oC.