

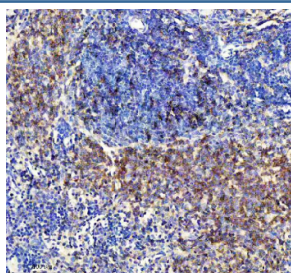
CXCR5 Antibody | C-X-C chemokine receptor type 5 [clone 20C58] (RQ8898)

Catalog No.	Formulation	Size
RQ8898	Antibody in PBS with 0.02% sodium azide, 50% glycerol and 0.4-0.5mg/ml BSA	100 ul

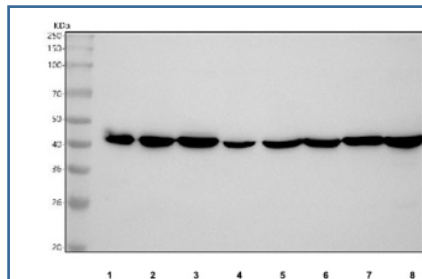
Recombinant **RABBIT MONOCLONAL**

[Bulk quote request](#)

Availability	1-3 days
Species Reactivity	Human, Mouse, Rat
Format	Purified
Host	Rabbit
Clonality	Recombinant Rabbit Monoclonal
Isotype	Rabbit IgG
Clone Name	20C58
Purity	Affinity chromatography
UniProt	P32302
Localization	Cytoplasm
Applications	Western Blot : 1:500 Immunohistochemistry (FFPE) : 1:50
Limitations	This CXCR5 antibody is available for research use only.



IHC staining of FFPE rat spleen tissue with CXCR5 antibody, HRP-secondary and DAB substrate. HIER: boil tissue sections in pH8 EDTA for 20 min and allow to cool before testing.



Western blot testing of 1) human MOLT4, 2) human HEL, 3) human Jurkat, 4) human U-2 OS, 5) rat PC-12, 6) rat C6, 7) mouse RAW264.7 and 8) mouse ANA-1 cell lysate with CXCR5 antibody. Predicted molecular weight ~43 kDa.

Description

C-X-C chemokine receptor type 5 (CXCR5) is a G protein-coupled receptor primarily expressed on B cells and certain subsets of T cells. It binds the chemokine CXCL13, guiding lymphocyte migration to B cell follicles within secondary lymphoid organs. CXCR5 plays a crucial role in lymphoid tissue organization and immune surveillance.

CXCR5 is essential for germinal center formation and effective humoral immune responses. Altered expression or function of CXCR5 has been associated with autoimmune diseases, immunodeficiencies, and certain cancers, making it an important focus in immunology and oncology research.

Using a high-quality CXCR5 antibody enables sensitive detection in applications such as flow cytometry, immunohistochemistry, and western blot. A CXCR5 antibody from NSJ Bioreagents ensures reproducibility and accuracy in studies involving immune cell trafficking, germinal center biology, and disease pathogenesis. Selecting the right CXCR5 antibody is key for obtaining reliable and consistent research results.

Application Notes

Optimal dilution of the CXCR5 antibody should be determined by the researcher.

Immunogen

A peptide sequence specific to C-X-C chemokine receptor type 5 was used as the immunogen for the CXCR5 antibody.

Storage

After reconstitution, the CXCR5 antibody can be stored for up to one month at 4°C. For long-term, aliquot and store at -20°C. Avoid repeated freezing and thawing.