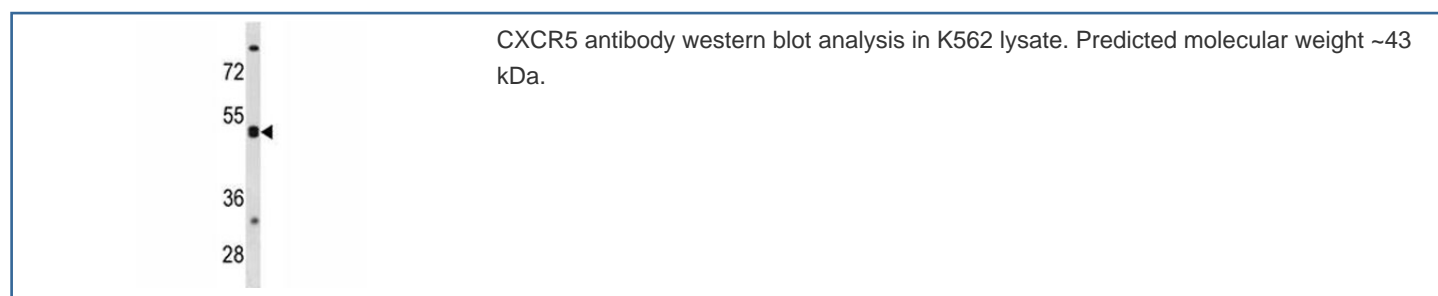


## CXCR5 Antibody / BLR1 / MDR15 (F47635)

Catalog No.	Formulation	Size
F47635-0.4ML	In 1X PBS, pH 7.4, with 0.09% sodium azide	0.4 ml
F47635-0.08ML	In 1X PBS, pH 7.4, with 0.09% sodium azide	0.08 ml

[Bulk quote request](#)

<b>Availability</b>	1-3 business days
<b>Species Reactivity</b>	Human
<b>Format</b>	Antigen affinity purified
<b>Host</b>	Rabbit
<b>Clonality</b>	Polyclonal (rabbit origin)
<b>Isotype</b>	Rabbit Ig
<b>Purity</b>	Antigen affinity
<b>UniProt</b>	P32302
<b>Applications</b>	Western Blot : 1:1000
<b>Limitations</b>	This CXCR5 antibody is available for research use only.



## Description

This gene was identified as a gene specifically expressed in Burkitt's lymphoma and lymphatic tissues. The protein encoded by this gene is predicted to be a seven transmembrane G protein- coupled receptor and belongs to the CXC chemokine receptor family. BLC, a B-lymphocyte chemoattractant, was identified to be a specific ligand for this receptor. Studies of this gene and its mouse counterpart strongly suggest the essential function of this gene in B cell migration and localization within specific anatomic compartments, such as follicles in lymph nodes as well as in spleen. Two alternatively spliced variants of this gene exist.

## Application Notes

Titration of the CXCR5 antibody may be required due to differences in protocols and secondary/substrate sensitivity.

## Immunogen

A portion of amino acids 1-30 from the human protein was used as the immunogen for this CXCR5 antibody.

## Storage

Aliquot the CXCR5 antibody and store frozen at -20oC or colder. Avoid repeated freeze-thaw cycles.