

## CXCR4 Antibody (R30338)

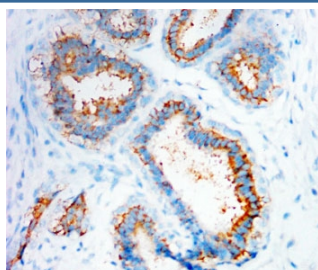
Catalog No.	Formulation	Size
R30338	0.5mg/ml if reconstituted with 0.2ml sterile DI water	100 ug

**Bulk quote request**

<b>Availability</b>	1-3 business days
<b>Species Reactivity</b>	Human, Mouse, Rat
<b>Format</b>	Antigen affinity purified
<b>Host</b>	Rabbit
<b>Clonality</b>	Polyclonal (rabbit origin)
<b>Isotype</b>	Rabbit IgG
<b>Purity</b>	Antigen affinity
<b>Buffer</b>	Lyophilized from 1X PBS with 2.5% BSA and 0.025% sodium azide/thimerosal
<b>UniProt</b>	P61073
<b>Localization</b>	Cytoplasmic
<b>Applications</b>	Western Blot : 0.5-1ug/ml IHC (FFPE) : 0.5-1ug/ml
<b>Limitations</b>	This CXCR4 antibody is available for research use only.



Western blot testing of CXCR4 antibody and HeLa cell lysate. Predicted molecular weight ~40 kDa but may be observed at higher molecular weights due to glycosylation.



IHC-P: CXCR4 antibody testing of human mammary cancer tissue.

## Description

Chemokine CXC Motif Receptor 4 is the receptor for the CXC chemokine SDF1 that has essential functions on embryo organogenesis, immunological functions and T lymphocyte trafficking. It is the only SDF1 receptor identified so far. This suggests that expression is critical for the biological effects of SDF1. CXCR4 is a seven-transmembrane-spanning, G-protein-coupled receptor for the CXC chemokine PBSF/SDF-1, it functions as a co-receptor for T-cell-line tropic human immunodeficiency virus HIV-1. Tachibana et al.(1998) conclude that PBSF/SDF-1 and CXCR4 define a new signalling system for organ vascularization.

## Application Notes

The stated application concentrations are suggested starting points. Titration of the CXCR4 antibody may be required due to differences in protocols and secondary/substrate sensitivity.

## Immunogen

An amino acid sequence from the N-terminus of the human protein (SGDYDSMKEPCFREEEN) was used as the immunogen for this CXCR4 antibody.

## Storage

After reconstitution, the CXCR4 antibody can be stored for up to one month at 4oC. For long-term, aliquot and store at -20oC. Avoid repeated freezing and thawing.