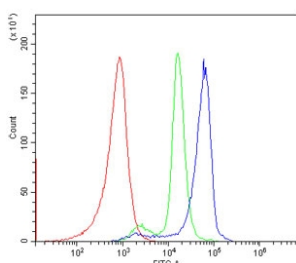


CXCR2 Antibody (RQ5688)

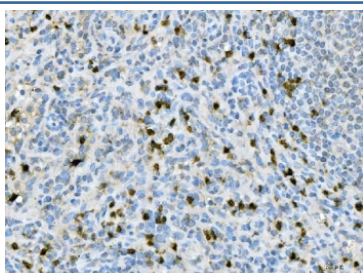
Catalog No.	Formulation	Size
RQ5688	0.5mg/ml if reconstituted with 0.2ml sterile DI water	100 ug

Bulk quote request

Availability	1-3 business days
Species Reactivity	Human
Format	Antigen affinity purified
Host	Rabbit
Clonality	Polyclonal (rabbit origin)
Isotype	Rabbit IgG
Purity	Affinity purified
Buffer	Lyophilized from 1X PBS with 2% Trehalose
UniProt	P25025
Applications	Immunohistochemistry : 1-2ug/ml Flow Cytometry : 1-3ug/million cells
Limitations	This CXCR2 antibody is available for research use only.



Flow cytometry testing of human PBM cells with CXCR2 antibody at 1ug/million cells (blocked with goat sera); Red=cells alone, Green=isotype control, Blue= CXCR2 antibody.



IHC staining of FFPE human spleen tissue with CXCR2 antibody. HIER: boil tissue sections in pH8 EDTA for 20 min and allow to cool before testing.

Description

CXCR2 is a receptor for Interleukin 8, which is a powerful neutrophil chemotactic factor. It is a member of the GPCR family (subfamily, chemokine). Binding of IL8 to the receptor causes activation of neutrophils. This response is mediated via a G-protein that activate a phosphatidylinositol-calcium second messenger system. This receptor binds to IL8 with a high affinity and to GRO/MGSA and NAP2 also with a high affinity. It has been reported to be expressed in a wide variety of tissues. ESTs have been isolated from human placenta and thymus libraries.

Application Notes

Optimal dilution of the CXCR2 antibody should be determined by the researcher.

Immunogen

Amino acids TLPPFLDAAPCEPESLEINK from the human protein were used as the immunogen for the CXCR2 antibody.

Storage

After reconstitution, the CXCR2 antibody can be stored for up to one month at 4oC. For long-term, aliquot and store at -20oC. Avoid repeated freezing and thawing.