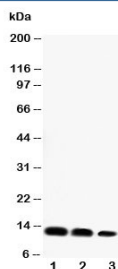


## CXCL16 Antibody (R30532)

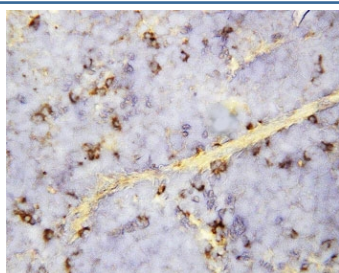
Catalog No.	Formulation	Size
R30532	0.5mg/ml if reconstituted with 0.2ml sterile DI water	100 ug

**Bulk quote request**

<b>Availability</b>	1-3 business days
<b>Species Reactivity</b>	Mouse
<b>Format</b>	Antigen affinity purified
<b>Clonality</b>	Polyclonal (rabbit origin)
<b>Isotype</b>	Rabbit IgG
<b>Purity</b>	Antigen affinity
<b>Buffer</b>	Lyophilized from 1X PBS with 2% Trehalose
<b>UniProt</b>	Q8BSU2
<b>Localization</b>	Cytoplasmic, nuclear
<b>Applications</b>	Western Blot : 0.5-1ug/ml IHC (FFPE) : 0.5-1ug/ml
<b>Limitations</b>	This CXCL16 antibody is available for research use only.



Western blot testing of CXCL16 antibody and Lane 1: recombinant mouse protein 10ng;  
2: 5ng; 3: 2.5ng



IHC-P: CXCL16 antibody testing of mouse spleen tissue

## Description

CXCL16, Chemokine(C-X-C motif) ligand 16, is a small cytokine belonging to the CXC chemokine family. Larger than other chemokines(with 254 amino acids ), CXCL16 is composed of a CXC chemokine domain, a mucin-like stalk, a transmembrane domain and a cytoplasmic tail containing a potential tyrosine phosphorylation site that may bind SH2. By somatic cell hybrid analysis, the CXCL16 gene is mapped to 17p13, a locus separate from all other known chemokines. Chemotaxis assays found that CXCL16 induced a strong chemotactic response in activated CD8 T cells. In addition, CXCL16 induced calcium mobilization.

## Application Notes

The stated application concentrations are suggested starting amounts. Titration of the CXCL16 antibody may be required due to differences in protocols and secondary/substrate sensitivity.

## Immunogen

An amino acid sequence from the middle region of mouse CXCL16 (HGKSFHHQKHLPPQA) was used as the immunogen for this CXCL16 antibody.

## Storage

After reconstitution, the CXCL16 antibody can be stored for up to one month at 4oC. For long-term, aliquot and store at -20oC. Avoid repeated freezing and thawing.