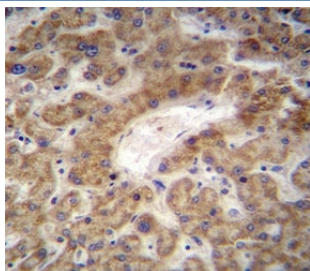


## CXCL12 Antibody / SDF1 (F42948)

| Catalog No.   | Formulation                                | Size    |
|---------------|--|---------|
| F42948-0.4ML  | In 1X PBS, pH 7.4, with 0.09% sodium azide | 0.4 ml  |
| F42948-0.08ML | In 1X PBS, pH 7.4, with 0.09% sodium azide | 0.08 ml |

**Bulk quote request**

|                           |  |
|---------------------------|--|
| <b>Availability</b>       | 1-3 business days  |
| <b>Species Reactivity</b> | Human  |
| <b>Format</b>             | Antigen affinity purified                                |
| <b>Clonality</b>          | Polyclonal (rabbit origin)                               |
| <b>Isotype</b>            | Rabbit Ig  |
| <b>Purity</b>             | Antigen affinity   |
| <b>UniProt</b>            | P48061   |
| <b>Applications</b>       | Western Blot : 1:1000<br>IHC (Paraffin) : 1:10-1:50      |
| <b>Limitations</b>        | This CXCL12 antibody is available for research use only. |



CXCL12 antibody immunohistochemistry analysis in formalin fixed and paraffin embedded human liver tissue.



CXCL12 antibody western blot analysis in NCI-H292 lysate. Predicted molecular weight: 9-12 kDa.

## Description

This gene encodes a stromal cell-derived alpha chemokine member of the intercrine family. This gene product and its receptor CXCR4 can activate lymphocytes and have been implicated in the metastasis of some cancers such as breast cancer. Mutations in this gene are associated with resistance to human immunodeficiency virus type 1 infections. Multiple transcript variants encoding different isoforms have been found for this gene.

## Application Notes

Titration of the CXCL12 antibody may be required due to differences in protocols and secondary/substrate sensitivity.

## Immunogen

A portion of amino acids 64-92 from the human protein was used as the immunogen for this CXCL12 antibody.

## Storage

Aliquot the CXCL12 antibody and store frozen at -20oC or colder. Avoid repeated freeze-thaw cycles.