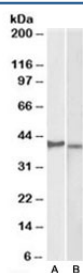


## CX3CR1 Antibody / CMKBRL1 (R33592)

Catalog No.	Formulation	Size
R33592-100UG	0.5 mg/ml in 1X TBS, pH7.3, with 0.5% BSA (US sourced) and 0.02% sodium azide	100 ug

[Bulk quote request](#)

Availability	1-3 business days
Species Reactivity	Human
Format	Antigen affinity purified
Host	Goat
Clonality	Polyclonal (goat origin)
Isotype	Goat Ig
Purity	Antigen affinity
Gene ID	1524
Applications	Western Blot : 1-3ug/ml ELISA (peptide) LOD : 1:128000
Limitations	This CX3CR1 antibody is available for research use only.



Western blot testing of KELLY [A] and U251-MG [B] lysates with CX3CR1 antibody at 2ug/ml. Predicted molecular weight ~40kDa.

## Description

Additional name(s) for this target protein: Chemokine (C-X3-C motif) receptor 1

## Application Notes

Optimal dilution of the CX3CR1 antibody should be determined by the researcher.

## Immunogen

Amino acids DQFPESVTENFEYD were used as the immunogen for this CX3CR1 antibody.

## **Storage**

Aliquot and store the CX3CR1 antibody at -20oC.