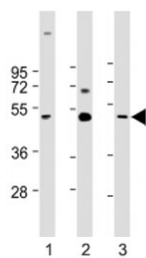


CX3CL1 Antibody (Center Region) (F54109)

Catalog No.	Formulation	Size
F54109-0.05ML	In 1X PBS, pH 7.4, with 0.09% sodium azide	0.05 ml

[Bulk quote request](#)

Availability	1-3 business days
Species Reactivity	Human
Format	Antigen affinity purified
Clonality	Polyclonal (rabbit origin)
Isotype	Rabbit Ig
Purity	Antigen affinity
UniProt	P78423
Applications	Western Blot : 1:1000-1:2000
Limitations	This CX3CL1 antibody is available for research use only.



Western blot testing of CX3CL1 antibody at 1:1000: Lane 1) human brain, 2) heart and 3) lung lysate. Predicted molecular weight ~42 kDa.

Description

The soluble form is chemotactic for T-cells and monocytes, but not for neutrophils. The membrane-bound form promotes adhesion of those leukocytes to endothelial cells. May play a role in regulating leukocyte adhesion and migration processes at the endothelium. Binds to CX3CR1. [UniProt]

Application Notes

The stated application concentrations are suggested starting points. Titration of the CX3CL1 antibody may be required due to differences in protocols and secondary/substrate sensitivity.

Immunogen

A portion of amino acids 272-306 from human CX3CL1 was used as the immunogen for the CX3CL1 antibody.

Storage

Aliquot the CX3CL1 antibody and store frozen at -20oC or colder. Avoid repeated freeze-thaw cycles.