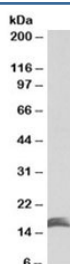


CUTA Antibody (R35510)

Catalog No.	Formulation	Size
R35510-100UG	0.5 mg/ml in 1X TBS, pH7.3, with 0.5% BSA (US sourced) and 0.02% sodium azide	100 ug

[Bulk quote request](#)

Availability	1-3 business days
Species Reactivity	Human
Format	Antigen affinity purified
Clonality	Polyclonal (goat origin)
Isotype	Goat Ig
Purity	Antigen affinity
Gene ID	51596
Applications	Western Blot : 1-3ug/ml ELISA (peptide) LOD : 1:64000
Limitations	This CUTA antibody is available for research use only.



Western blot testing of KELLY lysate with CUTA antibody at 1ug/ml. Predicted molecular weight: ~17kDa.

Description

Additional name(s) for this target protein: CutA divalent cation tolerance homolog

Application Notes

Optimal dilution of the CUTA antibody should be determined by the researcher.

Immunogen

Amino acids QVTESVSDSIT were used as the immunogen for this CUTA antibody.

Storage

Aliquot and store the CUTA antibody at -20oC.