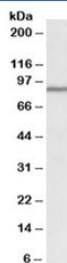


Cullin 3 Antibody (R33162)

Catalog No.	Formulation	Size
R33162-100UG	0.5 mg/ml in 1X TBS, pH7.3, with 0.5% BSA (US sourced) and 0.02% sodium azide	100 ug

[Bulk quote request](#)

Availability	1-3 business days
Species Reactivity	Human
Predicted Reactivity	Mouse, Rat
Format	Antigen affinity purified
Host	Goat
Clonality	Polyclonal (goat origin)
Isotype	Goat Ig
Purity	Antigen affinity
Gene ID	8452
Applications	Western Blot : 1-3ug/ml ELISA (peptide) LOD : 1:2000
Limitations	This Cullin 3 antibody is available for research use only.



Western blot testing of human heart lysate with Cullin 3 antibody at 1ug/ml. Predicted molecular weight: ~89kDa.

Description

Additional name(s) for this target protein: CUL3

Application Notes

Optimal dilution of the Cullin 3 antibody should be determined by the researcher.

Immunogen

Amino acids AQVTGSNTRKHILQ were used as the immunogen for this Cullin 3 antibody.

Storage

Aliquot and store the Cullin 3 antibody at -20oC.