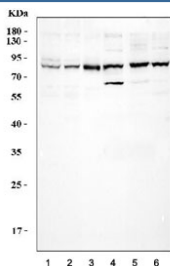


CUL3 Antibody (Cullin-3) (R31039)

Catalog No.	Formulation	Size
R31039	0.5mg/ml if reconstituted with 0.2ml sterile DI water	100 ug

Bulk quote request

Availability	1-3 business days
Species Reactivity	Human, Mouse, Rat
Format	Antigen affinity purified
Host	Rabbit
Clonality	Polyclonal (rabbit origin)
Isotype	Rabbit IgG
Purity	Antigen affinity
Buffer	Lyophilized from 1X PBS with 2.5% BSA and 0.025% sodium azide/thimerosal
UniProt	Q13618
Applications	Western Blot : 0.5-1ug/ml
Limitations	This CUL3 antibody is available for research use only.



Western blot testing of 1) human HeLa, 2) K562, 3) Ramos, 4) rat brain, 5) mouse brain and 6) mouse NIH 3T3 cell lysate with CUL3 antibody. Expected molecular weight: ~89 kDa.

Description

Cullin-3 is a protein that in humans is encoded by the CUL3 gene. Kipreos et al.(1996) identified a conserved gene family, designated cullins, with at least 5 members in nematodes, 6 in humans, and 3 in *S. cerevisiae*. Hartz (2012) mapped the gene to chromosome 2q36.2 based on an alignment of the CUL3 sequence with the genomic sequence (GRCh37). Sumara et al.(2007) found that KLHL9, KLHL13, and CUL-3 interacted directly in a 370-kD protein complex in HeLa cell lysates. Rondou et al.(2008) showed that interaction between KLHL12 and the CUL3 ubiquitin ligase complex directed ubiquitination of dopamine receptor D4(DRD4). KLHL12 interacted directly with CUL-3 and with the polymorphic intracellular loop-3 of D4. By immunoprecipitation analysis of HeLa cells and HCT116 human colon carcinoma cells

expressing epitope-tagged proteins, Kigoshi et al.(2011) showed that KLHL7 interacted with CUL-3 and ROC1(RBX1).

Application Notes

The stated application concentrations are suggested starting amounts. Titration of the CUL3 antibody may be required due to differences in protocols and secondary/substrate sensitivity.

Immunogen

An amino acid sequence from the middle region of human Cullin-3 (DVFERYKQHLARRLLTNK) was used as the immunogen for this CUL3 antibody (100% homologous in human, mouse and rat).

Storage

After reconstitution, the CUL3 antibody can be stored for up to one month at 4oC. For long-term, aliquot and store at -20oC. Avoid repeated freezing and thawing.