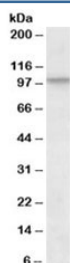


CUL2 Antibody (R35520)

| Catalog No. | Formulation | Size |
|--------------|---|--------|
| R35520-100UG | 0.5 mg/ml in 1X TBS, pH7.3, with 0.5% BSA (US sourced) and 0.02% sodium azide | 100 ug |

[Bulk quote request](#)

| | |
|----------------------|---|
| Availability | 1-3 business days |
| Species Reactivity | Human, Mouse |
| Predicted Reactivity | Rat, Dog, Cow |
| Format | Antigen affinity purified |
| Host | Goat |
| Clonality | Polyclonal (goat origin) |
| Isotype | Goat Ig |
| Purity | Antigen affinity |
| Gene ID | 8453 |
| Applications | Western Blot : 1-3ug/ml ELISA (peptide) LOD : 1:8000 |
| Limitations | This CUL2 antibody is available for research use only. |



Western blot testing of NIH3T3 lysate with CUL2 antibody at 1ug/ml. Predicted molecular weight: ~87 kDa, observed here at ~100 kDa.

Description

Additional name(s) for this target protein: Cullin 2

Application Notes

Optimal dilution of the CUL2 antibody should be determined by the researcher.

Immunogen

Amino acids QYIERSQASADE were used as the immunogen for this CUL2 antibody.

Storage

Aliquot and store the CUL2 antibody at -20oC.