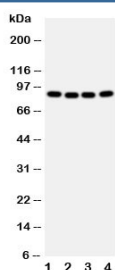


CUL2 Antibody Cullin-2 (R30977)

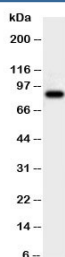
Catalog No.	Formulation	Size
R30977	0.5mg/ml if reconstituted with 0.2ml sterile DI water	100 ug

Bulk quote request

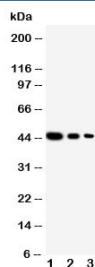
Availability	1-3 business days
Species Reactivity	Human, Mouse, Rat
Format	Antigen affinity purified
Clonality	Polyclonal (rabbit origin)
Isotype	Rabbit IgG
Purity	Antigen affinity
Buffer	Lyophilized from 1X PBS with 2.5% BSA and 0.025% sodium azide/thimerosal
UniProt	Q13617
Applications	Western Blot : 0.5-1ug/ml
Limitations	This Cullin 2 antibody is available for research use only.



Western blot testing of CUL2 antibody and human samples 1: A431; 2: SMMC-7721; 3: HeLa; 4: COLO320 cell lysate. Predicted/observed molecular weight: ~87 kDa.



Western blot testing of CUL2 antibody and rat brain tissue lysate



Western blot testing of CUL2 antibody and recombinant human protein: Lane 1. 10ng; 2. 5ng; 3. 2.5ng

Description

Cullin-2 is a protein that in humans is encoded by the CUL2 gene. Using immunofluorescence, it was shown that CUL2 is a cytosolic protein that can be translocated to the nucleus by VHL. By fluorescence in situ hybridization, Clifford et al.(1999) mapped the gene to 10p11.2-p11.1, a region reported to show loss of heterozygosity (LOH) in several forms of human cancer, including non-clear cell renal cell carcinoma. Pause et al.(1997) suggested that CUL2 is a candidate tumor suppressor gene, as has been proposed for CUL1 (603134). Lonergan et al.(1998) demonstrated that formation of the VBC-CUL2 complexes is linked to the regulation of hypoxia-inducible mRNAs by VHL. CUL2 is one of several proteins required for degradation of a class of RNA-binding germline proteins in somatic cells of the early blastomere.

Application Notes

The stated application concentrations are suggested starting amounts. Titration of the CUL2 antibody may be required due to differences in protocols and secondary/substrate sensitivity.

Immunogen

An amino acid sequence from the middle region of human Cullin-2 (HECQQRMVADHLQFLHA) was used as the immunogen for this CUL2 antibody.

Storage

After reconstitution, the CUL2 antibody can be stored for up to one month at 4°C. For long-term, aliquot and store at -20°C. Avoid repeated freezing and thawing.