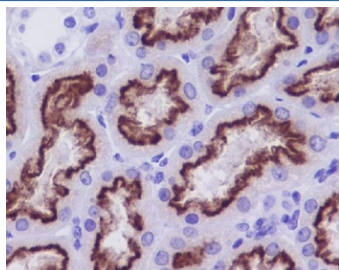


CUBN Antibody / Cubilin [clone GA-3] (RQ4757)

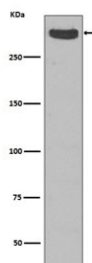
Catalog No.	Formulation	Size
RQ4757	Antibody in PBS with 0.02% sodium azide, 50% glycerol and 0.4-0.5mg/ml BSA	100 ul

[Bulk quote request](#)

Availability	1-2 weeks
Species Reactivity	Human
Format	Purified
Clonality	Rabbit Monoclonal
Isotype	Rabbit IgG
Clone Name	GA-3
Purity	Affinity purified
UniProt	O60494
Localization	Cytoplasmic, membrane
Applications	Western Blot : 1:500-1:2000 Immunohistochemistry (FFPE) : 1:50-1:200
Limitations	This CUBN antibody is available for research use only.



IHC staining of FFPE human kidney tissue with CUBN antibody. HIER: boil tissue sections in pH6, 10mM citrate buffer, for 10-20 min and allow to cool before testing.



Western blot testing of human fetal kidney with Cubilin antibody. Expected molecular weight: 399-460 kDa.

Description

Cotransporter which plays a role in lipoprotein, vitamin and iron metabolism, by facilitating their uptake. Binds to ALB, MB, Kappa and lambda-light chains, TF, hemoglobin, GC, SCGB1A1, APOA1, high density lipoprotein, and the CBLIF-cobalamin complex. The binding of all ligands requires calcium. Serves as important transporter in several absorptive epithelia, including intestine, renal proximal tubules and embryonic yolk sac. Interaction with LRP2 mediates its trafficking throughout vesicles and facilitates the uptake of specific ligands like GC, hemoglobin, ALB, TF and SCGB1A1. Interaction with AMN controls its trafficking to the plasma membrane and facilitates endocytosis of ligands. May play an important role in the development of the peri-implantation embryo through internalization of APOA1 and cholesterol. Binds to LGALS3 at the maternal-fetal interface. [UniProt]

Application Notes

Optimal dilution of the CUBN antibody should be determined by the researcher.

Immunogen

A synthetic peptide specific to human Cubilin / CUBN was used as the immunogen for the CUBN antibody.

Storage

Store the CUBN antibody at -20oC.