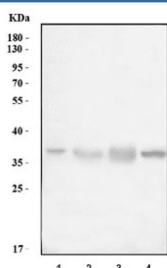


CTSL Antibody / Cathepsin L (RQ6857)

Catalog No.	Formulation	Size
RQ6857	0.5mg/ml if reconstituted with 0.2ml sterile DI water	100 ug

Bulk quote request

Availability	1-3 business days
Species Reactivity	Human, Mouse
Format	Antigen affinity purified
Clonality	Polyclonal (rabbit origin)
Isotype	Rabbit IgG
Purity	Antigen affinity purified
Buffer	Lyophilized from 1X PBS with 2% Trehalose
UniProt	P07711
Applications	Western Blot : 1-2ug/ml
Limitations	This CTSL antibody is available for research use only.



Western blot testing of 1) human HepG2, 2) human HCCT, 3) human HCCP and 4) mouse liver tissue lysate with CTSL antibody. Expected molecular weight: 38-41 kDa with multiple smaller processed/active forms.

Description

The protein encoded by this gene is a lysosomal cysteine proteinase that plays a major role in intracellular protein catabolism. Its substrates include collagen and elastin, as well as alpha-1 protease inhibitor, a major controlling element of neutrophil elastase activity. The encoded protein has been implicated in several pathologic processes, including myofibril necrosis in myopathies and in myocardial ischemia, and in the renal tubular response to proteinuria. This protein, which is a member of the peptidase C1 family, is a dimer composed of disulfide-linked heavy and light chains, both produced from a single protein precursor. Additionally, this protein cleaves the S1 subunit of the SARS-CoV-2 spike protein, which is necessary for entry of the virus into the cell.

Application Notes

Optimal dilution of the CTSL antibody should be determined by the researcher.

Immunogen

Amino acids EATEESCKYNPKYSVAND from the human protein were used as the immunogen for the CTSL antibody.

Storage

After reconstitution, the CTSL antibody can be stored for up to one month at 4oC. For long-term, aliquot and store at -20oC. Avoid repeated freezing and thawing.