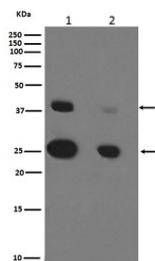


CTSD Antibody / Cathepsin D [clone CEF-3] (RQ5176)

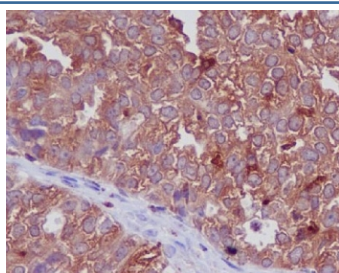
Catalog No.	Formulation	Size
RQ5176	Antibody in PBS with 0.02% sodium azide, 50% glycerol and 0.4-0.5mg/ml BSA	100 ul

[Bulk quote request](#)

Availability	1-2 weeks
Species Reactivity	Human
Format	Purified
Host	Rabbit
Clonality	Rabbit Monoclonal
Isotype	Rabbit IgG
Clone Name	CEF-3
Purity	Affinity purified
UniProt	P07339
Applications	Western Blot : 1:500-1:2000 Immunohistochemistry (FFPE) : 1:50-1:200
Limitations	This CTSD antibody is available for research use only.



Western blot testing of human 1) MCF7 and 2) SK-BR-3 cell lysate with CTSD antibody. Expected molecular weight: 43-46 kDa and 28 kDa (heavy chain).



IHC staining of FFPE human ovarian cancer with CTSD antibody. HIER: boil tissue sections in pH6, 10mM citrate buffer, for 10-20 min and allow to cool before testing.

Description

Cathepsin D / CTSD is an acid protease active in intracellular protein breakdown. Plays a role in APP processing following cleavage and activation by ADAM30 which leads to APP degradation. Involved in the pathogenesis of several diseases such as breast cancer and possibly Alzheimer disease.

Application Notes

Optimal dilution of the CTSD antibody should be determined by the researcher.

Immunogen

A synthetic peptide specific to human Cathepsin D / CTSD was used as the immunogen for the CTSD antibody.

Storage

Store the CTSD antibody at -20oC.