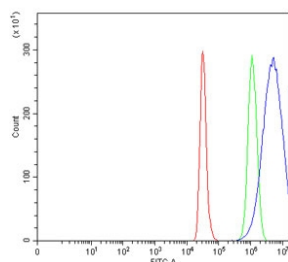


CTRL Antibody / Chymotrypsin-like protease CTRL-1 (RQ7223)

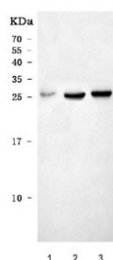
Catalog No.	Formulation	Size
RQ7223	0.5mg/ml if reconstituted with 0.2ml sterile DI water	100 ug

Bulk quote request

Availability	1-3 business days
Species Reactivity	Human, Mouse, Rat
Format	Antigen affinity purified
Clonality	Polyclonal (rabbit origin)
Isotype	Rabbit IgG
Purity	Antigen affinity purified
Buffer	Lyophilized from 1X PBS with 2% Trehalose
UniProt	P40313
Applications	Western Blot : 0.5-1ug/ml Flow Cytometry : 1-3ug/million cells Direct ELISA : 0.1-0.5ug/ml
Limitations	This CTRL antibody is available for research use only.



Flow cytometry testing of human HepG2 cells with CTRL antibody at 1ug/million cells (blocked with goat sera); Red=cells alone, Green=isotype control, Blue= CTRL antibody.



Western blot testing of 1) human PCP, 2) rat pancreas and 3) mouse pancreas tissue lysate with CTRL antibody. Predicted molecular weight ~28 kDa.

Description

Chymotrypsin-like protease CTRL-1 is an enzyme that in humans is encoded by the CTRL gene. This gene encodes a serine-type endopeptidase with chymotrypsin- and elastase-2-like activities. The gene encoding this zymogen is expressed specifically in the pancreas and likely functions as a digestive enzyme.

Application Notes

Optimal dilution of the CTRL antibody should be determined by the researcher.

Immunogen

Recombinant human protein (amino acids I34-N264) was used as the immunogen for the CTRL antibody.

Storage

After reconstitution, the CTRL antibody can be stored for up to one month at 4oC. For long-term, aliquot and store at -20oC. Avoid repeated freezing and thawing.