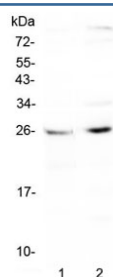


CTR1 Antibody / Copper transporter 1 (RQ4345)

Catalog No.	Formulation	Size
RQ4345	0.5mg/ml if reconstituted with 0.2ml sterile DI water	100 ug

Bulk quote request

Availability	1-3 business days
Species Reactivity	Human
Format	Antigen affinity purified
Host	Rabbit
Clonality	Polyclonal (rabbit origin)
Isotype	Rabbit IgG
Purity	Antigen affinity purified
Buffer	Lyophilized from 1X PBS with 2% Trehalose and 0.025% sodium azide
UniProt	O15431
Localization	Cell membrane
Applications	Western Blot : 0.5-1ug/ml
Limitations	This CTR1 antibody is available for research use only.



Western blot testing of human 1) HepG2 and 2) PANC-1 cell lysate with CTR1 antibody at 0.5ug/ml. Expected molecular weight ~25 kDa (unmodified), 35-37 kDa (glycosylated).

Description

High affinity copper uptake protein 1 (Ctr1) is a protein that in humans is encoded by the SLC31A1 gene. This gene is mapped to 9q32. The protein encoded by this gene is a high-affinity copper transporter found in the cell membrane. The encoded protein functions as a homotrimer to effect the uptake of dietary copper.

Application Notes

Optimal dilution of the CTR1 antibody should be determined by the researcher.

Immunogen

Amino acids NGTILMETHKTVGQQMLSFPHLLQTVLHIIQ were used as the immunogen for the CTR1 antibody.

Storage

After reconstitution, the CTR1 antibody can be stored for up to one month at 4oC. For long-term, aliquot and store at -20oC. Avoid repeated freezing and thawing.