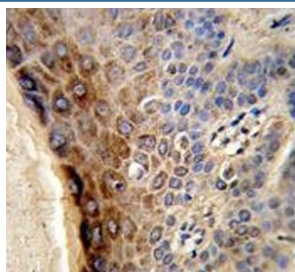


## CTHRC1 Antibody / Collagen triple helix repeat-containing protein 1 (F55001)

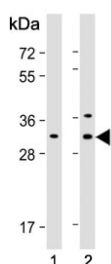
Catalog No.	Formulation	Size
F55001-0.4ML	In 1X PBS, pH 7.4, with 0.09% sodium azide	0.4 ml
F55001-0.08ML	In 1X PBS, pH 7.4, with 0.09% sodium azide	0.08 ml

**Bulk quote request**

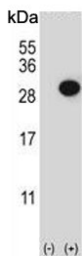
<b>Availability</b>	1-3 business days
<b>Species Reactivity</b>	Human
<b>Format</b>	Purified
<b>Clonality</b>	Polyclonal (rabbit origin)
<b>Isotype</b>	Rabbit Ig
<b>Purity</b>	Antigen affinity purified
<b>UniProt</b>	Q96CG8
<b>Applications</b>	Flow Cytometry : 1:10-1:50 (1x10e6 cells) Western Blot : 1:1000-1:5000 Immunohistochemistry (FFPE) : 1:50-1:100
<b>Limitations</b>	This CTHRC1 antibody is available for research use only.



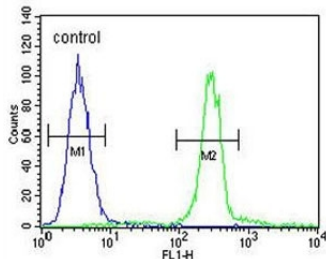
IHC testing of FFPE human skin tissue with CTHRC1 antibody. HIER: steam section in pH6 citrate buffer for 20 min and allow to cool prior to staining.



Western blot testing of human 1) HeLa and 2) HepG2 cell lysate with CTHRC1 antibody. Expected molecular weight: 26-30 kDa.



Western blot testing of 1) non-transfected and 2) transfected 293 cell lysate with CTHRC1 antibody.



Flow cytometry testing of human A375 cells with CTHRC1 antibody; Blue=isotype control, Green= CTHRC1 antibody.

## Description

CTHRC1 may act as a negative regulator of collagen matrix deposition (By similarity).

## Application Notes

The stated application concentrations are suggested starting points. Titration of the CTHRC1 antibody may be required due to differences in protocols and secondary/substrate sensitivity.

## Immunogen

A portion of amino acids 19-46 from the human protein was used as the immunogen for the CTHRC1 antibody.

## Storage

Aliquot the CTHRC1 antibody and store frozen at -20oC or colder. Avoid repeated freeze-thaw cycles.