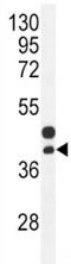


CTGF Antibody (F50761)

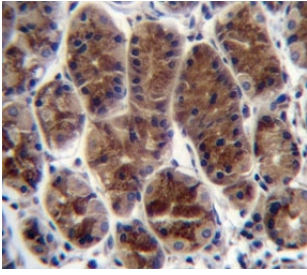
Catalog No.	Formulation	Size
F50761-0.4ML	In 1X PBS, pH 7.4, with 0.09% sodium azide	0.4 ml
F50761-0.08ML	In 1X PBS, pH 7.4, with 0.09% sodium azide	0.08 ml

[Bulk quote request](#)

Availability	1-3 business days
Species Reactivity	Human, Mouse
Predicted Reactivity	Rat, Bovine, Pig
Format	Purified
Host	Rabbit
Clonality	Polyclonal (rabbit origin)
Isotype	Rabbit Ig
Purity	Purified
UniProt	P29279
Localization	Cytoplasmic, secreted
Applications	Western Blot : 1:1000 IHC (Paraffin) : 1:10-1:50
Limitations	This CTGF antibody is available for research use only.



CTGF antibody western blot analysis in mouse bladder tissue lysate. Predicted molecular weight ~38 kDa.



CTGF antibody immunohistochemistry analysis in formalin fixed and paraffin embedded human stomach tissue.

Description

Connective tissue growth factor is a major connective tissue mitogen secreted by vascular endothelial cells. Promotes proliferation and differentiation of chondrocytes. Mediates heparin- and divalent cation-dependent cell adhesion in many cell types including fibroblasts, myofibroblasts, endothelial and epithelial cells. Enhances fibroblast growth factor-induced DNA synthesis. [UniProt]

Researchers studying connective tissue growth factor signaling, extracellular matrix regulation, fibrosis, and tissue remodeling may also be interested in our CTGF Antibody page.

Application Notes

The stated application concentrations are suggested starting amounts. Titration of the CTGF antibody may be required due to differences in protocols and secondary/substrate sensitivity.

Immunogen

The immunogen for the CTGF antibody is a portion of amino acids 134-159 (human).

Storage

Store at 4°C for up to one month. For long term, aliquot the CTGF antibody and store frozen at -20°C or colder. Avoid repeated freeze-thaw cycles.