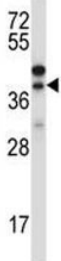


CTGF Antibody (F42950)

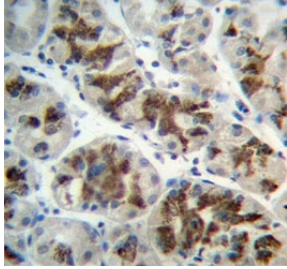
Catalog No.	Formulation	Size
F42950-0.4ML	In 1X PBS, pH 7.4, with 0.09% sodium azide	0.4 ml
F42950-0.08ML	In 1X PBS, pH 7.4, with 0.09% sodium azide	0.08 ml

[Bulk quote request](#)

Availability	1-3 business days
Species Reactivity	Human
Predicted Reactivity	Mouse, Rat, Pig
Format	Antigen affinity purified
Host	Rabbit
Clonality	Polyclonal (rabbit origin)
Isotype	Rabbit Ig
Purity	Antigen affinity
UniProt	P29279
Localization	Cytoplasmic, secreted
Applications	Western Blot : 1:1000 IHC (Paraffin) : 1:10-1:50
Limitations	This CTGF antibody is available for research use only.



Western blot testing of CTGF antibody and NCI-H460 lysate. Predicted/observed molecular weight ~38kDa.



IHC analysis of FFPE human stomach and CTGF antibody

Description

The protein encoded by this gene is a mitogen that is secreted by vascular endothelial cells. The encoded protein plays a role in chondrocyte proliferation and differentiation, cell adhesion in many cell types, and is related to platelet-derived growth factor. Certain polymorphisms in this gene have been linked with a higher incidence of systemic sclerosis. [provided by RefSeq].

Researchers studying connective tissue growth factor signaling, extracellular matrix regulation, fibrosis, and tissue remodeling may also be interested in our CTGF Antibody page.

Application Notes

Titration of the CTGF antibody may be required due to differences in protocols and secondary/substrate sensitivity.

Immunogen

A portion of amino acids 166-193 from the human protein was used as the immunogen for this CTGF antibody.

Storage

Aliquot the CTGF antibody and store frozen at -20oC or colder. Avoid repeated freeze-thaw cycles.