

CTDSP2 Antibody (F40177)

Catalog No.	Formulation	Size
F40177-0.4ML	In 1X PBS, pH 7.4, with 0.09% sodium azide	0.4 ml
F40177-0.08ML	In 1X PBS, pH 7.4, with 0.09% sodium azide	0.08 ml

[Bulk quote request](#)

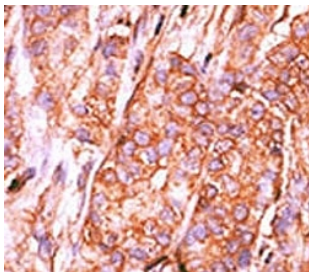
Availability	1-3 business days
Species Reactivity	Human, Mouse
Format	Purified
Clonality	Polyclonal (rabbit origin)
Isotype	Rabbit Ig
Purity	Purified
UniProt	O14595
Applications	Western Blot : 1:1000 IHC (Paraffin) : 1:50-1:100
Limitations	This CTDSP2 antibody is available for research use only.



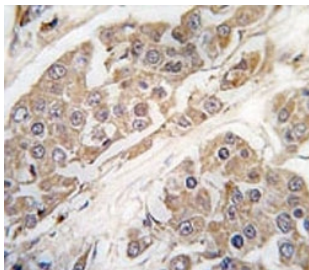
Western blot analysis of CTDSP2 antibody and mouse lung tissue lysate



Western blot analysis of CTDSP2 antibody and HepG2 lysate



IHC analysis of FFPE human breast carcinoma tissue stained with the CTDSP2 antibody



IHC analysis of FFPE human breast carcinoma tissue stained with CTDSP2 antibody

Description

CTDSP2 is one of several small CTD phosphatases (SCP). It has been proposed that SCP activity is an evolutionarily conserved transcriptional regulator that acts globally to silence neuronal genes. In addition, expression of phosphatase CTDSP2 mRNA is enhanced in several cancer cell lines with amplification of the CTDSP2 and CDK4 genes, and CTDSP2 coamplifies with CDK4 in some primary sarcomas. It may contribute to the development of a subset of sarcomas.

Application Notes

Titration of the CTDSP2 antibody may be required due to differences in protocols and secondary/substrate sensitivity.

Immunogen

A portion of amino acids 12-42 from the human protein was used as the immunogen for this CTDSP2 antibody.

Storage

Aliquot the CTDSP2 antibody and store frozen at -20oC or colder. Avoid repeated freeze-thaw cycles.