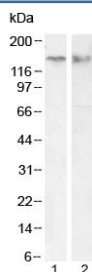


## CTCF Antibody (R36488)

Catalog No.	Formulation	Size
R36488-100UG	0.5 mg/ml in 1X TBS, pH7.3, with 0.5% BSA (US sourced) and 0.02% sodium azide	100 ug

[Bulk quote request](#)

Availability	1-3 business days
Species Reactivity	Human
Predicted Reactivity	Cow, Dog, Mouse, Rat
Format	Antigen affinity purified
Host	Goat
Clonality	Polyclonal (goat origin)
Isotype	Goat Ig
Purity	Antigen affinity
UniProt	P49711
Applications	Western Blot : 0.03-0.3ug/ml ELISA (peptide) LOD : 1:4000
Limitations	This CTCF antibody is available for research use only.



Western blot testing of human 1) Jurkat whole cell and 2) Jurkat nuclear fraction lysate with CTCF antibody at 0.03ug/ml and 0.1ug/ml, respectively. Observed molecular weight: 70/82/130 kDa (referred to as CTCF-70, -82 and -130).

## Description

Alternate name(s) for this target: Transcriptional repressor CTCF; 11-zinc finger protein; CCCTC-binding factor; CTCFL paralog

## Application Notes

Optimal dilution of the CTCF antibody should be determined by the researcher.

## **Immunogen**

Amino acids KKSKLRYTEEGKD were used as the immunogen for this CTCF antibody.

## **Storage**

Aliquot and store the CTCF antibody at -20oC.