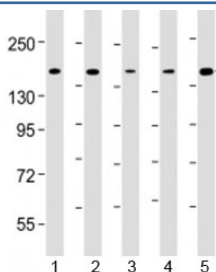


CTCF Antibody [clone 1723CT382.14.9] (F53943)

Catalog No.	Formulation	Size
F53943-0.2ML	In 1X PBS, pH 7.4, with 0.09% sodium azide	0.2 ml
F53943-0.05ML	In 1X PBS, pH 7.4, with 0.09% sodium azide	0.05 ml

[Bulk quote request](#)

Availability	1-3 business days
Species Reactivity	Human, Rat
Format	Purified
Host	Mouse
Clonality	Monoclonal (mouse origin)
Isotype	Mouse IgG1, kappa
Clone Name	1723CT382.14.9
Purity	Protein G affinity chromatography
UniProt	P49711
Applications	Western Blot : 1:2000-4000
Limitations	This CTCF antibody is available for research use only.



Western blot testing of human 1) K562, 2) Jurkat, 3) HeLa, 4) rat C6 and 5) human MOLT-4 cell lysate with CTCF antibody at 1:4000. Observed molecular weight: 70/82/130 kDa (referred to as CTCF-70, -82 and -130).

Description

CCCTC-binding factor is a chromatin binding factor that binds to DNA sequence specific sites. Involved in transcriptional regulation by binding to chromatin insulators and preventing interaction between promoter and nearby enhancers and silencers. Acts as transcriptional repressor binding to promoters of vertebrate MYC gene and BAG1 gene. Also binds to the PLK and PIM1 promoters.

Application Notes

Titration of the CTCF antibody may be required due to differences in protocols and secondary/substrate sensitivity.

Immunogen

A partial recombinant protein corresponding to amino acids 445-727 from the human protein was used as the immunogen for the CTCF antibody.

Storage

Aliquot the CTCF antibody and store frozen at -20oC or colder. Avoid repeated freeze-thaw cycles.

References (1)