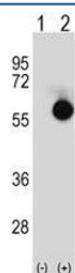


## CTBP2 Antibody (F42556)

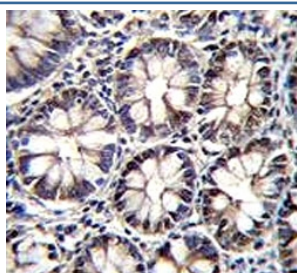
Catalog No.	Formulation	Size
F42556-0.4ML	In 1X PBS, pH 7.4, with 0.09% sodium azide	0.4 ml
F42556-0.08ML	In 1X PBS, pH 7.4, with 0.09% sodium azide	0.08 ml

[Bulk quote request](#)

<b>Availability</b>	1-3 business days
<b>Species Reactivity</b>	Human
<b>Predicted Reactivity</b>	Bovine, Mouse, Rat, Xenopus
<b>Format</b>	Antigen affinity purified
<b>Clonality</b>	Polyclonal (rabbit origin)
<b>Isotype</b>	Rabbit Ig
<b>Purity</b>	Antigen affinity
<b>UniProt</b>	P56545
<b>Applications</b>	Western Blot : 1:1000 IHC (Paraffin) : 1:10-1:50
<b>Limitations</b>	This CTBP2 antibody is available for research use only.



Western blot analysis of CTBP2 antibody and 293 cell lysate either nontransfected (Lane 1) or transiently transfected (2) with the CTBP2 gene.



CTBP2 antibody immunohistochemistry analysis in formalin fixed and paraffin embedded human rectum tissue.

## Description

This gene produces alternative transcripts encoding two distinct proteins. One protein is a transcriptional repressor, while the other isoform is a major component of specialized synapses known as synaptic ribbons. Both proteins contain a NAD<sup>+</sup> binding domain similar to NAD<sup>+</sup>-dependent 2-hydroxyacid dehydrogenases. A portion of the 3' untranslated region was used to map this gene to chromosome 21q21.3; however, it was noted that similar loci elsewhere in the genome are likely. Blast analysis shows that this gene is present on chromosome 10. [provided by RefSeq].

## Application Notes

Titration of the CTBP2 antibody may be required due to differences in protocols and secondary/substrate sensitivity.

## Immunogen

A portion of amino acids 1-30 from the human protein was used as the immunogen for this CTBP2 antibody.

## Storage

Aliquot the CTBP2 antibody and store frozen at -20oC or colder. Avoid repeated freeze-thaw cycles.